

CYP2E1 polyclonal antibody

Catalog: AP0016

Host: Rabbit

Reactivity: Human,Rat,Mouse

BackGround:

Cytochrome P450 2E1, metabolizes several precarcinogens, drugs, and solvents to reactive metabolites. Inactivates a number of drugs and xenobiotics and also bioactivates many xenobiotic substrates to their hepatotoxic or carcinogenic forms.

Product:

Rabbit IgG, 1mg/ml in PBS with 0.02% sodium azide, 50% glycerol, pH7.4.

Molecular Weight:

~ 55 kDa

Swiss-Prot:

P05181

Purification&Purity:

The antibody was affinity-purified from rabbit antiserum by affinity-chromatography using epitope-specific immunogen and the purity is > 95% (by SDS-PAGE).

Applications:

WB: 1:1000~1:2000

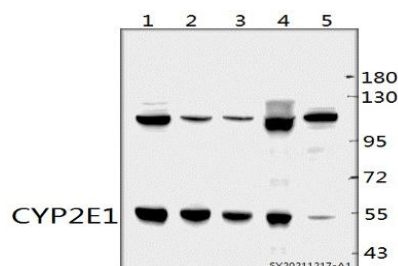
Storage&Stability:

Store at 4 °C short term. Aliquot and store at -20 °C long term. Avoid freeze-thaw cycles.

Specificity:

CYP2E1 polyclonal antibody detects endogenous levels of CYP2E1 protein.

DATA:



Western blot (WB) analysis of CYP2E1 polyclonal antibody at 1:1000 dilution

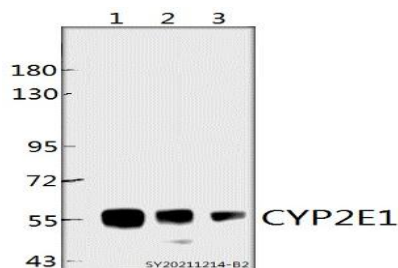
Lane1:Pancl whole cell lysate(40ug)

Lane2:A375 whole cell lysate(40ug)

Lane3:LO2 whole cell lysate(40ug)

Lane4:HEK293T whole cell lysate(40ug)

Lane5:A549 whole cell lysate(40ug)



Western blot (WB) analysis of CYP2E1 polyclonal antibody at 1:1000 dilution

Lane1:The Liver tissue lysate of Rat(40ug)

Lane2:The Liver tissue lysate of Mouse(40ug)

Lane3:The Kidney tissue lysate of Rat(40ug)

Note:

For research use only, not for use in diagnostic procedure.

Bioworld Technology, Inc.

Add: 1660 South Highway 100, Suite 500 St. Louis Park, MN 55416, USA.

Email: info@bioworld.com

Tel: 6123263284

Fax: 6122933841

Bioworld technology, co. Ltd.

Add: No 9, weidi road Qixia District Nanjing, 210046, P. R. China.

Email: info@biogot.com

Tel: 0086-025-68037686

Fax: 0086-025-68035151