

CD30 (Q21) polyclonal antibody

Catalog: AP0801

Host: Rabbit

Reactivity: Human, Mouse, Rat

Background:

The tumor necrosis factor (TNF) receptor family is composed of several type I integral membrane glycoproteins that exhibit homology in their cysteine-rich extracellular domains. Members of this family include FAS, OX40, CD27 and CD30. CD30 is a surface marker for neoplastic cells of the Hodgkin's lymphoma and related hematologic malignancies.

Product:

Rabbit IgG, 1mg/ml in PBS with 0.02% sodium azide, 50% glycerol, pH7.2

Molecular Weight:

~ 120 kDa

Swiss-Prot:

P28908

Purification&Purity:

The antibody was affinity-purified from rabbit antiserum by affinity-chromatography using epitope-specific immunogen and the purity is > 96% (by SDS-PAGE).

Applications:

WB: 1:500~1:1000

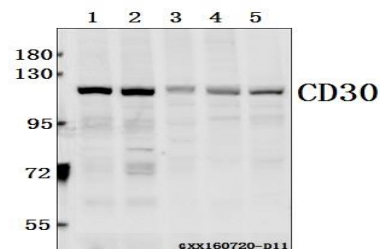
Storage&Stability:

Store at 4 °C short term. Aliquot and store at -20 °C long term. Avoid freeze-thaw cycles.

Specificity:

CD30 (Q21) polyclonal antibody detects endogenous levels of CD30 protein.

DATA:



Western blot (WB) analysis of CD30 (Q21) polyclonal antibody at 1:500 dilution

Lane1:MCF-7 whole cell lysate(40ug)

Lane2:HEK293T whole cell lysate(40ug)

Lane3:PC12 whole cell lysate(40ug)

Lane4:BV2 whole cell lysate(40ug)

Lane5:The Kidney tissue lysate of Mouse(40ug)

Note:

For research use only, not for use in diagnostic procedure.

Bioworld Technology, Inc.

Add: 1660 South Highway 100, Suite 500 St. Louis Park, MN 55416, USA.

Email: info@bioworld.com

Tel: 6123263284

Fax: 6122933841

Bioworld technology, co. Ltd.

Add: No 9, weidi road Qixia District Nanjing, 210046, P. R. China.

Email: info@biogot.com

Tel: 0086-025-68037686

Fax: 0086-025-68035151