

FHIT (E116) polyclonal antibody

Catalog: BS1126

Host: Rabbit

Reactivity: Human, Mouse

BackGround:

FHIT, a candidate tumor suppressor gene, contains the FRA3B common fragile site and is highly susceptible to carcinogen damage. The pattern of mutational inactivation seen with the FHIT gene is unique compared with other known tumor suppressors. FHIT gene structure and expression have been shown to be altered in esophageal, head, neck, lung, gastric, breast, and cervical carcinomas. It has been demonstrated that FHIT exon loss is associated with smoking duration or asbestos exposure. The FHIT protein is a member of the histidine triad (HIT) superfamily and functions as a dinucleoside 5',5'''-P1,P3-triphosphate hydrolase.

Product:

Rabbit IgG, 1mg/ml in PBS with 0.02% sodium azide, 50% glycerol, pH7.2

Molecular Weight:

~ 20 kDa

Swiss-Prot:

P49789

Purification&Purity:

The antibody was affinity-purified from rabbit antiserum by affinity-chromatography using epitope-specific immunogen and the purity is > 95% (by SDS-PAGE).

Applications:

WB: 1:500~1:1000

IHC: 1:50~1:200

IF: 1:50~1:200

IP: 1:50~1:200

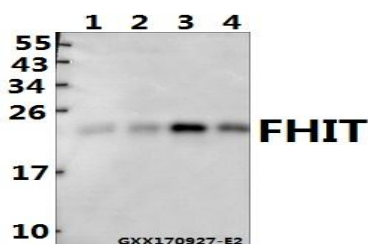
Storage&Stability:

Store at 4 °C short term. Aliquot and store at -20 °C long term. Avoid freeze-thaw cycles.

Specificity:

FHIT (E116) polyclonal antibody detects endogenous levels of FHIT protein.

DATA:



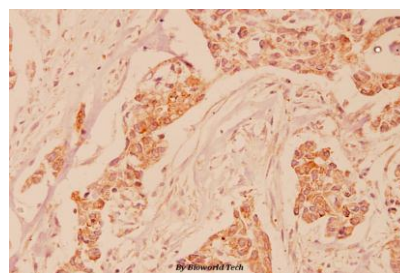
Western blot (WB) analysis of FHIT (E116) pAb at 1:500 dilution

Lane1:SK-OVCAR3 whole cell lysate(40ug)

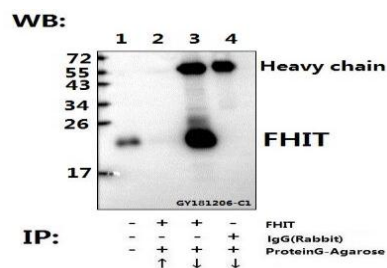
Lane2:The Kidney tissue lysate of Mouse(40ug)

Lane3:MCF-7 whole cell lysate(40ug)

Lane4:SGC7901 whole cell lysate(40ug)



Immunohistochemistry (IHC) analyzes of FHIT (E116) pAb in paraffin-embedded human breast carcinoma tissue at 1:100.



Immunoprecipitation of MCF-7 cell lysate using

FHIT (E116) polyclonal antibody (Sepharose Bead Conjugate)

#BD0048(lane 2 and lane 3) and Nonspecific IgG Control (Sepharose Bead Conjugate) #BD0048 (lane 4).Lane 1 is 30% input.The western blot was probed using FHIT (E116) pAb. “ ↑ ” (supernatant) ; “ ↓ ” (deposition)

Note:

Bioworld Technology, Inc.

Add: 1660 South Highway 100, Suite 500 St. Louis Park, MN 55416, USA.

Email: info@bioworld.com

Tel: 6123263284

Fax: 6122933841

Bioworld technology, co. Ltd.

Add: No 9, weidi road Qixia District Nanjing, 210046, P. R. China.

Email: info@biogot.com

Tel: 0086-025-68037686

Fax: 0086-025-68035151



PRODUCT DATA SHEET

Bioworld Technology, Inc.

For research use only, not for use in diagnostic procedure.

Bioworld Technology, Inc.

Add: 1660 South Highway 100, Suite 500 St. Louis Park,
MN 55416, USA.

Email: info@bioworld.com

Tel: 6123263284

Fax: 6122933841

Bioworld technology, co. Ltd.

Add: No 9, weidi road Qixia District Nanjing, 210046,
P. R. China.

Email: info@biogot.com

Tel: 0086-025-68037686

Fax: 0086-025-68035151