

HSP105 (P819) polyclonal antibody

Catalog: BS1176

Host: Rabbit

Reactivity: Human, Mouse, Rat

BackGround:

The heat shock proteins (HSPs) comprise a group of highly conserved, abundantly expressed proteins with diverse functions, including the assembly and sequestering of multiprotein complexes, transportation of nascent polypeptide chains across cellular membranes and regulation of protein folding. Heat shock proteins (also known as molecular chaperones) fall into six general families: HSP 90, HSP 70, HSP 60, the low molecular weight HSPs, the immunophilins and the HSP 110 family. The HSP 110 family (also known as the HSP 105 family) is composed of HSP 105, Apg-1 and Apg-2. HSP 105 is a testis-specific and HSP 90-related protein. Research indicates that HSP 105 is specifically localized in the germ cells and may translocate into the nucleus after heat shock. It is suggested that HSP 105 may contribute to the stabilization of p53 proteins in the cytoplasm of the germ cells, preventing the potential induction of apoptosis by p53.

Product:

Rabbit IgG, 1mg/ml in PBS with 0.02% sodium azide, 50% glycerol, pH7.2

Molecular Weight:

~ 105 kDa

Swiss-Prot:

Q92598

Purification&Purity:

The antibody was affinity-purified from rabbit antiserum by affinity-chromatography using epitope-specific immunogen and the purity is > 95% (by SDS-PAGE).

Applications:

WB: 1:500~1:1000

IHC/IF: 1:50~1:200

IP: 1:10~1:100

Storage&Stability:

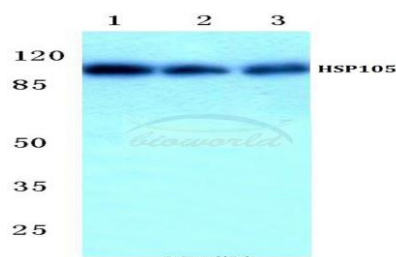
Store at 4 °C short term. Aliquot and store at -20 °C long

term. Avoid freeze-thaw cycles.

Specificity:

HSP105 (P819) polyclonal antibody detects endogenous levels of HSP105 protein.

DATA:

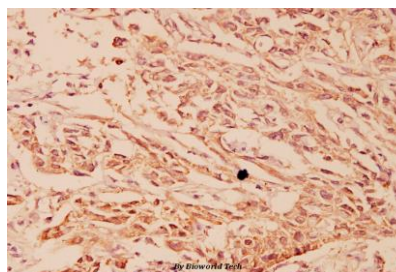


Western blot (WB) analysis of HSP105 (P819) polyclonal antibody at 1:500 dilution

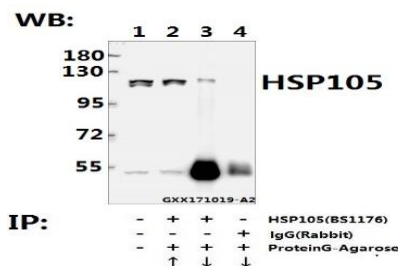
Lane1:HEK293T cell lysate

Lane2:NIH-3T3 cell lysate

Lane3:PC12 cell lysate



Immunohistochemistry (IHC) analyzes of HSP105 (P819) pAb in paraffin-embedded human breast carcinoma tissue at 1:100.



Immunoprecipitation of L02 whole cell lysate using HSP105 (P819)

pAb (Sepharose Bead Conjugate) #BD0047(lane 2 and lane 3) and

Nonspecific IgG Control (Sepharose Bead Conjugate)#BD0047 (lane

Bioworld Technology, Inc.

Add: 1660 South Highway 100, Suite 500 St. Louis Park, MN 55416, USA.

Email: info@bioworld.com

Tel: 6123263284

Fax: 6122933841

Bioworld technology, co. Ltd.

Add: No 9, weidi road Qixia District Nanjing, 210046, P. R. China.

Email: info@biogot.com

Tel: 0086-025-68037686

Fax: 0086-025-68035151



PRODUCT DATA SHEET

Bioworld Technology, Inc.

4) .Lane 1 is 20% input. The western blot was probed using HSP105 (P819) pAb #BS1176. “↑” (supernatant) ; “↓” (deposition)

Note:

For research use only, not for use in diagnostic procedure.

Bioworld Technology, Inc.

Add: 1660 South Highway 100, Suite 500 St. Louis Park,
MN 55416, USA.

Email: info@bioworld.com

Tel: 6123263284

Fax: 6122933841

Bioworld technology, co. Ltd.

Add: No 9, weidi road Qixia District Nanjing, 210046,
P. R. China.

Email: info@biogot.com

Tel: 0086-025-68037686

Fax: 0086-025-68035151