

## Cytokeratin 16 (S451) polyclonal antibody

Catalog: BS1202

Host: Rabbit

Reactivity: Human, Mouse, Rat

### BackGround:

Keratin 16 is expressed in keratinocytes, which are undergoing rapid turnover in the suprabasal region (also known as hyperproliferation-related keratins). Keratin 16 is absent in normal breast tissue and in noninvasive breast carcinomas. Only 10% of the invasive breast carcinomas show diffuse or focal positivity. Reportedly, a relatively high concordance was found between the carcinomas immunostaining with the basal cell and the hyperproliferation-related keratins, but not between these markers and the proliferation marker Ki-67. This supports the conclusion that basal cells in breast cancer may show extensive proliferation, and that absence of Ki-67 staining does not mean that (tumor) cells are not proliferating

### Product:

Rabbit IgG, 1mg/ml in PBS with 0.02% sodium azide, 50% glycerol, pH7.2

### Molecular Weight:

~ 52 kDa

### Swiss-Prot:

P08779

### Purification&Purity:

The antibody was affinity-purified from rabbit antiserum by affinity-chromatography using epitope-specific immunogen and the purity is > 95% (by SDS-PAGE).

### Applications:

WB: 1:500~1:1000

IHC: 1:50~1:200

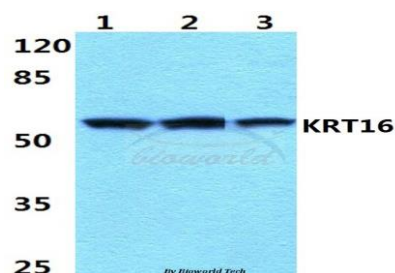
### Storage&Stability:

Store at 4 °C short term. Aliquot and store at -20 °C long term. Avoid freeze-thaw cycles.

### Specificity:

Cytokeratin 16 (S451) polyclonal antibody detects endogenous levels of Cytokeratin 16 protein.

### DATA:

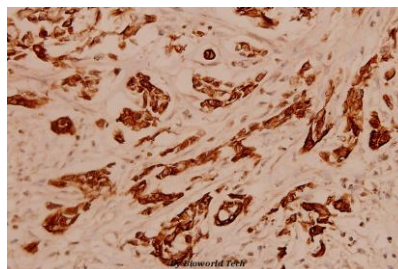


Western blot (WB) analysis of Cytokeratin 16 (S451) polyclonal antibody at 1:500 dilution

Lane1:MCF-7 cell lysate

Lane2:sp2/0 cell lysate

Lane3:PC12 cell lysate



Immunohistochemistry (IHC) analyzes of Cytokeratin 16 (S451) pAb in paraffin-embedded human breast carcinoma tissue at 1:100.

### Note:

For research use only, not for use in diagnostic procedure.

### Bioworld Technology, Inc.

Add: 1660 South Highway 100, Suite 500 St. Louis Park, MN 55416, USA.

Email: [info@bioworld.com](mailto:info@bioworld.com)

Tel: 6123263284

Fax: 6122933841

### Bioworld technology, co. Ltd.

Add: No 9, weidi road Qixia District Nanjing, 210046, P. R. China.

Email: [info@biogot.com](mailto:info@biogot.com)

Tel: 0086-025-68037686

Fax: 0086-025-68035151