

## Cyclin L1 (E491) polyclonal antibody

Catalog: BS1285

Host: Rabbit

Reactivity: Human, Mouse, Rat

### BackGround:

Cell proliferation is controlled at specific stages of the cell cycle by distinct protein kinase complexes. These complexes consist of a catalytic subunit associating with a specific regulatory subunit to form the active kinase. The cyclins, which include cyclin A, B, C, D, E, F, G, H, I, K, L, T and their related proteins, including Dbf4, comprise the regulatory subunits of these kinase complexes. The controlled activation of the kinase complexes at various intervals of the cell cycle is regulated by the availability of the cyclins to the catalytic subunit. Unlike the catalytic subunit, which is expressed continually, the expression and stability of the regulatory subunit fluctuates depending on the stage of the cell cycle and, thereby, regulates the kinase activity. Cyclin L1 is a ubiquitously expressed nuclear protein that can be detected in higher levels in thymus. In neck and head squamous cell carcinomas, cyclin L1 can be overexpressed and is therefore often considered a proto-oncogene. It interacts with POLR2A, CDC2L and SFRS2. Cyclin L1 plays a role in the mRNA splicing process regulation.

### Product:

Rabbit IgG, 1mg/ml in PBS with 0.02% sodium azide, 50% glycerol, pH7.2

### Molecular Weight:

~ 60 kDa

### Swiss-Prot:

Q9UK58

### Purification&Purity:

The antibody was affinity-purified from rabbit antiserum by affinity-chromatography using epitope-specific immunogen and the purity is > 95% (by SDS-PAGE).

### Applications:

WB: 1:500~1:1000

IHC: 1:50~1:200

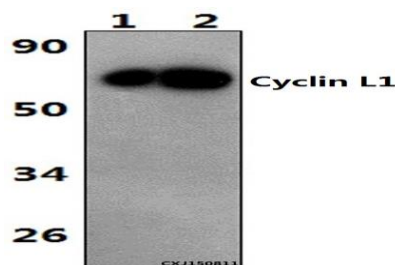
### Storage&Stability:

Store at 4 °C short term. Aliquot and store at -20 °C long term. Avoid freeze-thaw cycles.

### Specificity:

Cyclin-L1 (E491) polyclonal antibody detects endogenous levels of Cyclin-L1 protein.

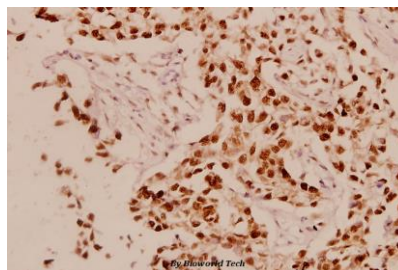
### DATA:



Western blot (WB) analysis of Cyclin L1 (E491) polyclonal antibody at 1:500 dilution

Lane1: The thymus tissue lysate of Mouse(40ug)

Lane2: The thymus tissue lysate of Rat(40ug)



Immunohistochemistry (IHC) analyzes of Cyclin L1 (E491) pAb in paraffin-embedded human breast carcinoma tissue at 1:100.

### Note:

For research use only, not for use in diagnostic procedure.

### Bioworld Technology, Inc.

Add: 1660 South Highway 100, Suite 500 St. Louis Park, MN 55416, USA.

Email: [info@bioworld.com](mailto:info@bioworld.com)

Tel: 6123263284

Fax: 6122933841

### Bioworld technology, co. Ltd.

Add: No 9, weidi road Qixia District Nanjing, 210046, P. R. China.

Email: [info@biogot.com](mailto:info@biogot.com)

Tel: 0086-025-68037686

Fax: 0086-025-68035151