

## BACE (D492) polyclonal antibody

Catalog: BS1382

Host: Rabbit

Reactivity: Human, Mouse, Rat

### BackGround:

Autosomal dominant Alzheimer's disease is caused by mutations in the gene encoding the  $\beta$ -amyloid protein precursor (APP). Amyloid  $\beta$ -peptide ( $A\beta$ ), the major feature of amyloid plaques in Alzheimer's patients, is the product of APP cleavage by  $\beta$ - and  $\gamma$ -secretases. BACE is the transmembrane protease which cleaves  $A\beta$  from APP. BACE and the related protein Asp1 are both widely expressed in human tissue with the highest levels in the pancreas. BACE has a molecular mass of ~70 kDa, larger than predicted due to glycosylation, and is localized within Golgi and endosomes.

### Product:

Rabbit IgG, 1mg/ml in PBS with 0.02% sodium azide, 50% glycerol, pH7.2

### Molecular Weight:

~ 50 kDa

### Swiss-Prot:

P56817

### Purification&Purity:

The antibody was affinity-purified from rabbit antiserum by affinity-chromatography using epitope-specific immunogen and the purity is > 95% (by SDS-PAGE).

### Applications:

IHC: 1:50~1:200

IF: 1:50~1:200

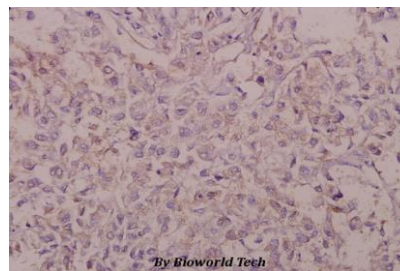
### Storage&Stability:

Store at 4 °C short term. Aliquot and store at -20 °C long term. Avoid freeze-thaw cycles.

### Specificity:

BACE (D492) polyclonal antibody detects endogenous levels of BACE protein.

### DATA:



Immunohistochemistry (IHC) analyzes of BACE (D492) pAb in paraffin-embedded human colorectal carcinoma tissue at 1:50.

### Note:

For research use only, not for use in diagnostic procedure.

### Bioworld Technology, Inc.

Add: 1660 South Highway 100, Suite 500 St. Louis Park, MN 55416, USA.

Email: [info@bioworld.com](mailto:info@bioworld.com)

Tel: 6123263284

Fax: 6122933841

### Bioworld technology, co. Ltd.

Add: No 9, weidi road Qixia District Nanjing, 210046, P. R. China.

Email: [info@biogot.com](mailto:info@biogot.com)

Tel: 0086-025-68037686

Fax: 0086-025-68035151