

## Rpb1 (P1613) polyclonal antibody

Catalog: BS1419

Host: Rabbit

Reactivity: Human, Mouse, Rat

### BackGround:

RPB1 is a subunit of RNA polymerase II which catalyses transcription of RNA from DNA. RPB1 forms the polymerase active center together with the second largest subunit. Pol II is the central component of the basal RNA polymerase II transcription machinery. It is composed of mobile elements that move relative to each other. RPB1 is part of the core element with the central large cleft, the clamp element that moves to open and close the cleft and the jaws that are thought to grab the incoming DNA template.

### Product:

Rabbit IgG, 1mg/ml in PBS with 0.02% sodium azide, 50% glycerol, pH7.2

### Molecular Weight:

~ 217, 240 kDa

### Swiss-Prot:

P24928

### Purification&Purity:

The antibody was affinity-purified from rabbit antiserum by affinity-chromatography using epitope-specific immunogen and the purity is > 95% (by SDS-PAGE).

### Applications:

WB: 1:500~1:1000

IHC: 1:50~1:200

IF: 1:50~1:200

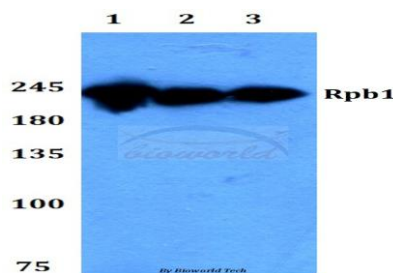
### Storage&Stability:

Store at 4 °C short term. Aliquot and store at -20 °C long term. Avoid freeze-thaw cycles.

### Specificity:

POLR2A (P1613) polyclonal antibody detects endogenous levels of POLR2A protein.

### DATA:

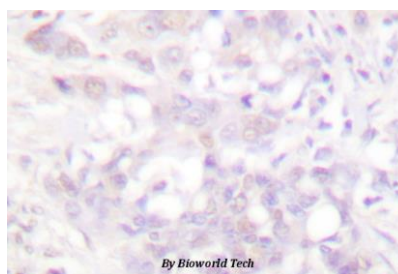


Western blot (WB) analysis of Rpb1 (P1613) polyclonal antibody at 1:500 dilution

Lane1:Hela whole cell lysate

Lane2:Raw264.7 whole cell lysate

Lane3:PC12 whole cell lysate



Immunohistochemistry (IHC) analyzes of POLR2A (P1613) pAb in paraffin-embedded human breast carcinoma tissue.

### Note:

For research use only, not for use in diagnostic procedure.

### Bioworld Technology, Inc.

Add: 1660 South Highway 100, Suite 500 St. Louis Park, MN 55416, USA.

Email: [info@bioworld.com](mailto:info@bioworld.com)

Tel: 6123263284

Fax: 6122933841

### Bioworld technology, co. Ltd.

Add: No 9, weidi road Qixia District Nanjing, 210046, P. R. China.

Email: [info@biogot.com](mailto:info@biogot.com)

Tel: 0086-025-68037686

Fax: 0086-025-68035151