

Cbl (E768) polyclonal antibody

Catalog: BS1439

Host: Rabbit

Reactivity: Human, Mouse, Rat

BackGround:

Cbl (also designated the c-Cbl proto-oncogene, E3 ubiquitin-protein ligase CBL, Casitas B-lineage lymphoma proto-oncogene and RING finger protein 55) has been identified as the cellular homolog of the v-Cbl oncogene isolated from an NFS/N mouse that developed a pre-B cell lymphoma following infection with the replication-competent Cas Br-M murine leukemic virus. c-Cbl is expressed at relatively high levels in a wide range of hematopoietic tumor cell lines as well as in normal tissues such as thymus and testis.

Product:

Rabbit IgG, 1mg/ml in PBS with 0.02% sodium azide, 50% glycerol, pH7.2

Molecular Weight:

~ 100, 120kDa

Swiss-Prot:

P22681

Purification&Purity:

The antibody was affinity-purified from rabbit antiserum by affinity-chromatography using epitope-specific immunogen and the purity is > 95% (by SDS-PAGE).

Applications:

WB: 1:500~1:1000

IHC: 1:50~1:200

IF: 1:50~1:200

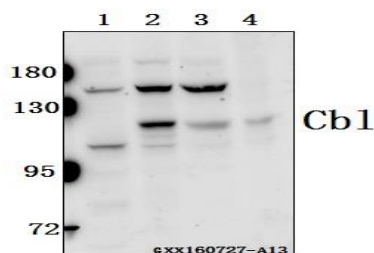
Storage&Stability:

Store at 4 °C short term. Aliquot and store at -20 °C long term. Avoid freeze-thaw cycles.

Specificity:

CBL (E768) polyclonal antibody detects endogenous levels of CBL protein.

DATA:



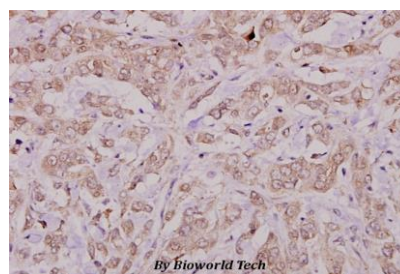
Western blot (WB) analysis of Cbl (E768) pAb at 1:500 dilution

Lane1:PC12 whole cell lysate(40ug)

Lane2:BV2 whole cell lysate(40ug)

Lane3:HCT116 whole cell lysate(40ug)

Lane4:MCF-7 whole cell lysate(40ug)



Immunohistochemistry (IHC) analyzes of Cbl (E768) pAb in paraffin-embedded human breast carcinoma tissue at 1:100.

Note:

For research use only, not for use in diagnostic procedure.

Bioworld Technology, Inc.

Add: 1660 South Highway 100, Suite 500 St. Louis Park, MN 55416, USA.

Email: info@bioworld.com

Tel: 6123263284

Fax: 6122933841

Bioworld technology, co. Ltd.

Add: No 9, weidi road Qixia District Nanjing, 210046, P. R. China.

Email: info@biogot.com

Tel: 0086-025-68037686

Fax: 0086-025-68035151