

Lamin A/C (R386) polyclonal antibody

Catalog: BS1446

Host: Rabbit

Reactivity: Human, Mouse, Rat

BackGround:

A unique family of cysteine proteases has been described that differs in sequence, structure and substrate specificity from any previously described protease family. This family, termed CED-3/ICE, functions as key components of the apoptotic machinery and act to destroy specific target proteins which are critical to cellular longevity. Nuclear lamins are critical to maintaining the integrity of the nuclear envelope and cellular morphology.

Product:

Rabbit IgG, 1mg/ml in PBS with 0.02% sodium azide, 50% glycerol, pH7.2

Molecular Weight:

~ 74, 65 kDa

Swiss-Prot:

P02545

Purification&Purity:

The antibody was affinity-purified from rabbit antiserum by affinity-chromatography using epitope-specific immunogen and the purity is > 95% (by SDS-PAGE).

Applications:

WB: 1:500~1:1000

IHC: 1:50~1:200

IF: 1:50~1:200

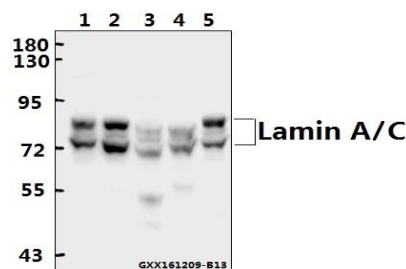
Storage&Stability:

Store at 4 °C short term. Aliquot and store at -20 °C long term. Avoid freeze-thaw cycles.

Specificity:

Lamin A/C (R386) polyclonal antibody detects endogenous levels of Lamin A/C protein.

DATA:



Western blot (WB) analysis of Lamin A/C (R386) polyclonal antibody at 1:500 dilution

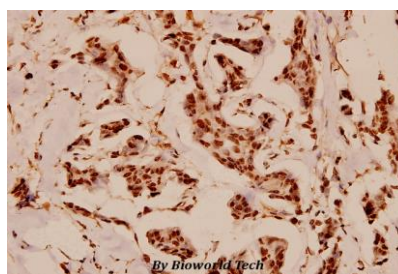
Lane1:HepG2 whole cell lysate(40ug)

Lane2:L02 whole cell lysate(40ug)

Lane3:PC12 whole cell lysate(40ug)

Lane4:AML-12 whole cell lysate(40ug)

Lane5:A549 whole cell lysate(40ug)



Immunohistochemistry (IHC) analyzes of Lamin A/C (R386) pAb in paraffin-embedded human breast carcinoma tissue at 1:100.

Note:

For research use only, not for use in diagnostic procedure.

Bioworld Technology, Inc.

Add: 1660 South Highway 100, Suite 500 St. Louis Park, MN 55416, USA.

Email: info@bioworld.com

Tel: 6123263284

Fax: 6122933841

Bioworld technology, co. Ltd.

Add: No 9, weidi road Qixia District Nanjing, 210046, P. R. China.

Email: info@biogot.com

Tel: 0086-025-68037686

Fax: 0086-025-68035151