

## SENP1 (D2) polyclonal antibody

Catalog: BS1469

Host: Rabbit

Reactivity: Human, Mouse, Rat

### BackGround:

SUMO (small ubiquitin-related modifier), a member of the ubiquitin-like protein family, regulates diverse cellular functions of a variety of target proteins including transcription, DNA repair, nucleocytoplasmic trafficking and chromosome segregation. SUMO precursor proteins undergo cleavage of the residues after the "GG" region by SUMO-specific proteases in maturation. This cleavage of the precursor is a prerequisite for subsequent sumoylation. The sentrin-specific (or SUMO-specific) protease (SENP) proteins belong to the peptidase C48 family and include SENP1-3 and SENP5-8. SENP1, SENP2 and SENP3 degrade UBL1 and SMT3H2 conjugates and subsequently release the monomers from sumoylated substrates.

### Product:

Rabbit IgG, 1mg/ml in PBS with 0.02% sodium azide, 50% glycerol, pH7.2

### Molecular Weight:

~ 73 kDa

### Swiss-Prot:

Q9P0U3

### Purification&Purity:

The antibody was affinity-purified from rabbit antiserum by affinity-chromatography using epitope-specific immunogen and the purity is > 95% (by SDS-PAGE).

### Applications:

WB: 1:500~1:1000

IHC: 1:50~1:200

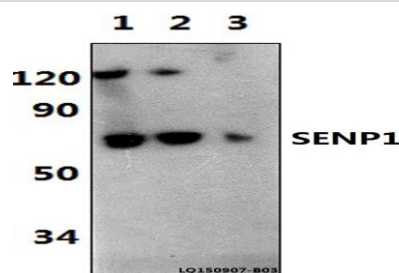
### Storage&Stability:

Store at 4 °C short term. Aliquot and store at -20 °C long term. Avoid freeze-thaw cycles.

### Specificity:

SENP1 (D2) polyclonal antibody detects endogenous levels of SENP1 protein.

### DATA:

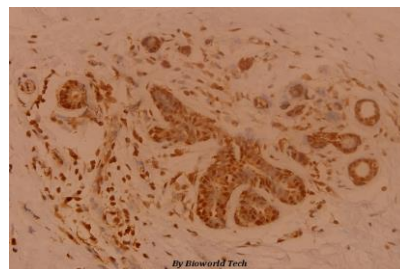


Western blot (WB) analysis of SENP1 (D2) polyclonal antibody at 1:500 dilution

Lane1:Hela whole cell lysate(40ug)

Lane2:The Testis cells tissue lysate of Rat(40ug)

Lane3:The Testis cells tissue lysate of Mouse(40ug)



Immunohistochemistry (IHC) analyzes of SENP1 (D2) pAb in paraffin-embedded human breast carcinoma tissue at 1:100.

### Note:

For research use only, not for use in diagnostic procedure.

### Bioworld Technology, Inc.

Add: 1660 South Highway 100, Suite 500 St. Louis Park, MN 55416, USA.

Email: [info@bioworld.com](mailto:info@bioworld.com)

Tel: 6123263284

Fax: 6122933841

### Bioworld technology, co. Ltd.

Add: No 9, weidi road Qixia District Nanjing, 210046, P. R. China.

Email: [info@biogot.com](mailto:info@biogot.com)

Tel: 0086-025-68037686

Fax: 0086-025-68035151