

Tubulin β (4D9) monoclonal antibody

Catalog: BS1482M-NT Host: Mouse Reactivity: Human, Mouse, Rabbit, Frog, Fish, Chicken, Rat (not applicable to tissue)

Background:

Microtubules are constituent parts of the mitotic apparatus, cilia, flagella, and elements of the cytoskeleton. They consist principally of 2 soluble proteins, alpha- and beta-tubulin, each of about 55,000 Da.

Antibodies against beta Tubulin are useful as loading controls for Western Blotting. However it should be noted that levels of beta Tubulin may not be stable in certain cells.

Product:

1mg/ml in PBS with 0.02% sodium azide, 50% glycerol, pH7.2

Molecular Weight:

~ 55 kDa

Swiss-Prot:

Q13509/P04350/P68371/P07437/Q13885/Q9BUF5

Purification&Purity:

The antibody was affinity-purified from mouse ascites by affinity-chromatography using epitope-specific immunogen and the purity is > 95% (by SDS-PAGE).

Applications:

WB: 1:5000~20000

IHC: 1:100~500

IF: 1:100~500

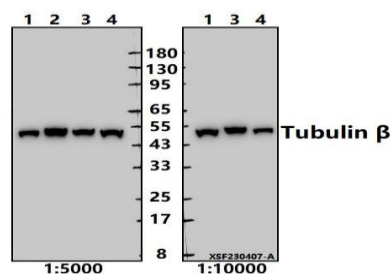
Storage&Stability:

Store at 4 °C short term. Aliquot and store at -20 °C long term. Avoid freeze-thaw cycles.

Specificity:

Tubulin β (4D9) mAb detects endogenous levels of β -Tubulin protein.

DATA:



Western blot (WB) analysis of Tubulin β (4D9) mAb at 1:5000/1:10000 dilution

Lane1:C6 whole cell lysate(20ug)

Lane2:CT26 whole cell lysate(20ug)

Lane3:MCF-7 whole cell lysate(20ug)

Lane4:A549 whole cell lysate(20ug)

Note:

For research use only, not for use in diagnostic procedure.

Bioworld Technology, Inc.

Add: 1660 South Highway 100, Suite 500 St. Louis Park, MN 55416, USA.

Email: info@bioworld.com

Tel: 6123263284

Fax: 6122933841

Bioworld technology, co. Ltd.

Add: No 9, weidi road Qixia District Nanjing, 210046, P. R. China.

Email: info@biogot.com

Tel: 0086-025-68037686

Fax: 0086-025-68035151