

PDE4D (H47) polyclonal antibody

Catalog: BS1572

Host: Rabbit

Reactivity: Human, Mouse, Rat

BackGround:

Phosphodiesterases (PDE) hydrolyze cAMP to 5'AMP and thus play a critical role in the regulation of intracellular cAMP. Division of the PDE superfamily by sequence homology and enzymatic properties yields 11 PDE families. A unique upstream conserved region (UCR) characterizes the PDE4 family. Four separate genes (A-D) encode the PDE4 enzymes, and alternative splicing generates short or long isoforms of each gene. Long PDE4 isoforms contain both UCR1 and UCR2 while short PDE4 isoforms possess only UCR2. Both UCR domains are necessary for dimerization of PDE4 isoforms. The human PDE4D gene maps to chromosome 5q12.

Product:

Rabbit IgG, 1mg/ml in PBS with 0.02% sodium azide, 50% glycerol, pH7.2

Molecular Weight:

~ 91 kDa

Swiss-Prot:

Q08499

Purification&Purity:

The antibody was affinity-purified from rabbit antiserum by affinity-chromatography using epitope-specific immunogen and the purity is > 95% (by SDS-PAGE).

Applications:

WB: 1:500~1:1000

IHC: 1:50~1:200

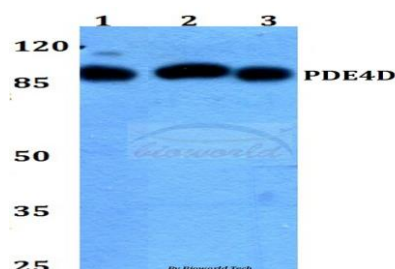
Storage&Stability:

Store at 4 °C short term. Aliquot and store at -20 °C long term. Avoid freeze-thaw cycles.

Specificity:

PDE4D (H47) polyclonal antibody detects endogenous levels of PDE4D protein.

DATA:

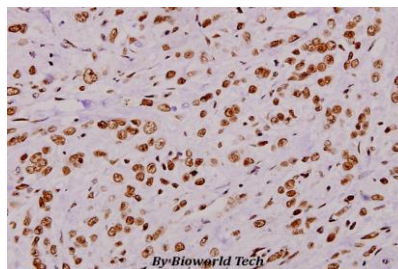


Western blot (WB) analysis of PDE4D (H47) polyclonal antibody at 1:500 dilution

Lane1:HEK293T whole cell lysate

Lane2:sp2/0 whole cell lysate

Lane3:H9C2 whole cell lysate



Immunohistochemistry (IHC) analyzes of PDE4B/C/D (H47) pAb in paraffin-embedded human breast carcinoma tissue at 1:100.

Note:

For research use only, not for use in diagnostic procedure.

Bioworld Technology, Inc.

Add: 1660 South Highway 100, Suite 500 St. Louis Park, MN 55416, USA.

Email: info@bioworld.com

Tel: 6123263284

Fax: 6122933841

Bioworld technology, co. Ltd.

Add: No 9, weidi road Qixia District Nanjing, 210046, P. R. China.

Email: info@biogot.com

Tel: 0086-025-68037686

Fax: 0086-025-68035151