

## Crystallin- $\alpha$ B (L55) polyclonal antibody

Catalog: BS1626

Host: Rabbit

Reactivity: Human, Mouse, Rat

### BackGround:

$\alpha$ -crystallins consist of three gene products,  $\alpha$ A,  $\alpha$ B and  $\alpha$ C-crystallin, which are members of the small heat shock protein family (HSP 20). They are induced by heat shock, and act as molecular chaperones by holding denatured proteins in large soluble aggregates. However, unlike other molecular chaperones,  $\alpha$ -crystallins do not renature these proteins. Expression of  $\alpha$ A-crystallin is restricted to the lens. Defects in this gene cause autosomal dominant congenital cataracts (ADCC). The human  $\alpha$ B-crystallin gene product is expressed in many tissues, including lens, heart and skeletal muscle. Elevated expression of  $\alpha$ B-crystallin is associated with many neurological diseases, and a missense mutation in this gene has co-segregated in a family with a Desmin-related myopathy.

### Product:

Rabbit IgG, 1mg/ml in PBS with 0.02% sodium azide, 50% glycerol, pH7.2

### Molecular Weight:

~ 20 kDa

### Swiss-Prot:

P02511

### Purification&Purity:

The antibody was affinity-purified from rabbit antiserum by affinity-chromatography using epitope-specific immunogen and the purity is > 95% (by SDS-PAGE).

### Applications:

WB: 1:500~1:1000

IHC: 1:50~1:200

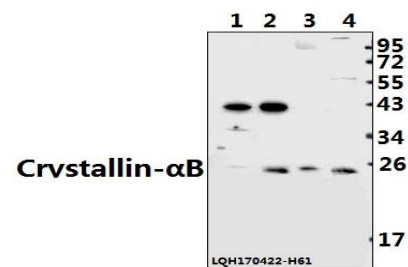
### Storage&Stability:

Store at 4 °C short term. Aliquot and store at -20 °C long term. Avoid freeze-thaw cycles.

### Specificity:

Crystallin- $\alpha$ B (L55) polyclonal antibody detects endogenous levels of Crystallin- $\alpha$ B protein.

### DATA:



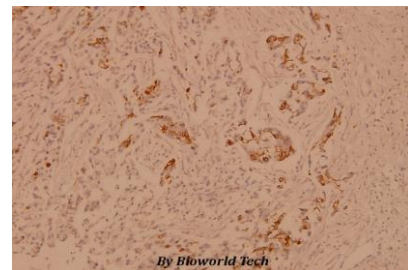
Western blot (WB) analysis of Crystallin- $\alpha$ B (L55) pAb at 1:500 dilution

Lane1:MEF whole cell lysate(40ug)

Lane2:PMVEC whole cell lysate(40ug)

Lane3:A549 whole cell lysate(40ug)

Lane4:HEK293T whole cell lysate(40ug)



Immunohistochemistry (IHC) analyzes of Crystallin- $\alpha$ B (L55) pAb in paraffin-embedded human breast carcinoma tissue at 1:100.

### Note:

For research use only, not for use in diagnostic procedure.

### Bioworld Technology, Inc.

Add: 1660 South Highway 100, Suite 500 St. Louis Park, MN 55416, USA.

Email: [info@bioworld.com](mailto:info@bioworld.com)

Tel: 6123263284

Fax: 6122933841

### Bioworld technology, co. Ltd.

Add: No 9, weidi road Qixia District Nanjing, 210046, P. R. China.

Email: [info@biogot.com](mailto:info@biogot.com)

Tel: 0086-025-68037686

Fax: 0086-025-68035151