

GAS3 (A142) polyclonal antibody

Catalog: BS1688

Host: Rabbit

Reactivity: Human, Mouse

BackGround:

PMP 22 is a 22 kDa glycoprotein expressed in the compact myelin of the peripheral nervous system. In the peripheral nervous system, PMP 22 is produced by myelinating Schwann cells and is coexpressed with the genes for myelin basic protein (MBP) during nerve development and regeneration. Alterations in the level of this protein cause several genetic human diseases. If the protein is duplicated, patients develop Charcot Marie Tooth disease. If one copy of the gene is deleted, they suffer from the inherited tendency to pressure palsies.

Product:

Rabbit IgG, 1mg/ml in PBS with 0.02% sodium azide, 50% glycerol, pH7.2

Molecular Weight:

~ 22 kDa

Swiss-Prot:

Q01453

Purification&Purity:

The antibody was affinity-purified from rabbit antiserum by affinity-chromatography using epitope-specific immunogen and the purity is > 95% (by SDS-PAGE).

Applications:

WB: 1:500~1:1000

IHC: 1:50~1:200

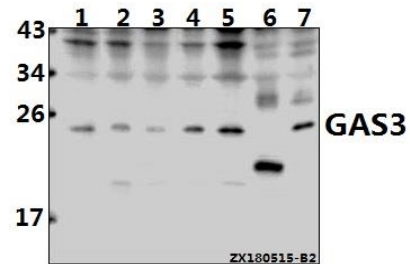
Storage&Stability:

Store at 4 °C short term. Aliquot and store at -20 °C long term. Avoid freeze-thaw cycles.

Specificity:

GAS3 (A142) polyclonal antibody detects endogenous levels of GAS3 protein.

DATA:



Western blot (WB) analysis of GAS3 (A142) pAb at 1:500 dilution

Lane1:MCF-7 whole cell lysate(40ug)

Lane2:H1792 whole cell lysate(40ug)

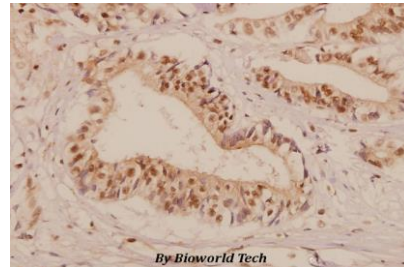
Lane3:A2780 whole cell lysate(40ug)

Lane4:HCT116 whole cell lysate(40ug)

Lane5:PC3 whole cell lysate(40ug)

Lane6:PMVEC whole cell lysate(40ug)

Lane7:CT-26 whole cell lysate(40ug)



Immunohistochemistry (IHC) analyzes of GAS3 (A142) pAb in paraffin-embedded human colorectal carcinoma tissue at 1:50.

Note:

For research use only, not for use in diagnostic procedure.

Bioworld Technology, Inc.

Add: 1660 South Highway 100, Suite 500 St. Louis Park, MN 55416, USA.

Email: info@bioworld.com

Tel: 6123263284

Fax: 6122933841

Bioworld technology, co. Ltd.

Add: No 9, weidi road Qixia District Nanjing, 210046, P. R. China.

Email: info@biogot.com

Tel: 0086-025-68037686

Fax: 0086-025-68035151