

Csk (L558) polyclonal antibody

Catalog: BS1739

Host: Rabbit

Reactivity: Human, Mouse, Rat

BackGround:

C terminal Src kinase (CSK) is a non receptor protein tyrosine kinase. One of its major functions is to specifically phosphorylate a conserved C terminal tyrosine of Src family kinases thereby down regulating their kinase activity. CSK is expressed ubiquitously as a protein of approximately 50 KDa in cytosol, but a fraction distributes to lipid rafts due to interaction with the lipid raft associated protein PAG (CSK binding protein).

Product:

Rabbit IgG, 1mg/ml in PBS with 0.02% sodium azide, 50% glycerol, pH7.2

Molecular Weight:

~ 50 kDa

Swiss-Prot:

P41240

Purification&Purity:

The antibody was affinity-purified from rabbit antiserum by affinity-chromatography using epitope-specific immunogen and the purity is > 95% (by SDS-PAGE).

Applications:

WB: 1:500~1:1000

IHC: 1:50~1:200

Storage&Stability:

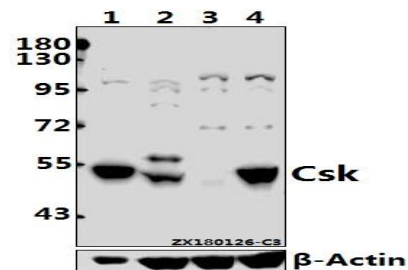
Store at 4 °C short term. Aliquot and store at -20 °C long term. Avoid freeze-thaw cycles.

Specificity:

Csk (L558) polyclonal antibody detects endogenous lev-

els of Csk protein.

DATA:



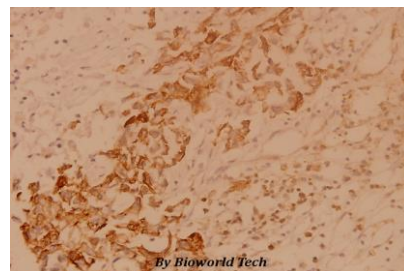
Western blot (WB) analysis of Csk (L558) pAb at 1:500 dilution

Lane1:PMVEC whole cell lysate(20ug)

Lane2:AML-12 whole cell lysate(40ug)

Lane3:H1792 whole cell lysate(40ug)

Lane4:HepG2 whole cell lysate(40ug)



Immunohistochemistry (IHC) analyzes of Csk (L558) pAb in paraffin-embedded human breast carcinoma tissue at 1:100.

Note:

For research use only, not for use in diagnostic procedure.

Bioworld Technology, Inc.

Add: 1660 South Highway 100, Suite 500 St. Louis Park, MN 55416, USA.

Email: info@bioworld.com

Tel: 6123263284

Fax: 6122933841

Bioworld technology, co. Ltd.

Add: No 9, weidi road Qixia District Nanjing, 210046, P. R. China.

Email: info@biogot.com

Tel: 0086-025-68037686

Fax: 0086-025-68035151