

NIPA (S350) polyclonal antibody

Catalog: BS1847

Host: Rabbit

Reactivity: Human, Mouse

BackGround:

Entry into mitosis is essentially driven by cyclin B1 which is located in the cytoplasm throughout interphase, but accumulates in the nucleus just before mitosis occurs. Nuclear Interaction Partner of ALK (NIPA) plays a critical role in cyclin B1 regulation. NIPA is normally phosphorylated during G2 and M phases, resulting in an accumulation of cyclin B1. When NIPA sheds its attached phosphate, it binds to SCF to form the SCFNIPA complex, a member of the E3 ubiquitin ligases, which ubiquitinates cyclin B1, thereby targeting it to the proteasome for degradation.

Product:

Rabbit IgG, 1mg/ml in PBS with 0.02% sodium azide, 50% glycerol, pH7.2

Molecular Weight:

~ 60-65 kDa

Swiss-Prot:

Q86WB0

Purification&Purity:

The antibody was affinity-purified from rabbit antiserum by affinity-chromatography using epitope-specific immunogen and the purity is > 95% (by SDS-PAGE).

Applications:

WB: 1:500~1:1000

IF: 1:50~1:200

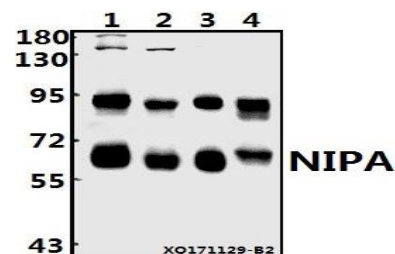
Storage&Stability:

Store at 4 °C short term. Aliquot and store at -20 °C long term. Avoid freeze-thaw cycles.

Specificity:

NIPA (S350) polyclonal antibody detects endogenous levels of NIPA protein.

DATA:



Western blot (WB) analysis of NIPA (S350) pAb at 1:500 dilution

Lane1:PC3 whole cell lysate(20ug)

Lane2:K562 whole cell lysate(40ug)

Lane3:HEK293T whole cell lysate(10ug)

Lane4:AML-12 whole cell lysate(40ug)

Note:

For research use only, not for use in diagnostic procedure.

Bioworld Technology, Inc.

Add: 1660 South Highway 100, Suite 500 St. Louis Park, MN 55416, USA.

Email: info@bioworld.com

Tel: 6123263284

Fax: 6122933841

Bioworld technology, co. Ltd.

Add: No 9, weidi road Qixia District Nanjing, 210046, P. R. China.

Email: info@biogot.com

Tel: 0086-025-68037686

Fax: 0086-025-68035151