

BAF53 (W237) polyclonal antibody

Catalog: BS1910

Host: Rabbit

Reactivity: Human, Mouse, Rat

BackGround:

The SWI/SNF complex regulates gene expression via ATP-dependent chromatin remodeling. Brm (SNF2-a), Brg-1 (SNF2-b), Ini1 (integrase interactor 1, SNF5), BAF53 (ARPN β), BAF57, BAF155 (SRG3), and BAF170 make up the functional core. BAF53 homologues from yeast to humans contain a conserved N-terminal motif, which contains residues at serine 2 and tyrosine 6, which play important roles in BAF53 activity. The BAF53 protein shuttles between the nucleus and cytoplasm. BAF53 also forms a complex with TIP49 and TIP48, which mediates c-Myc oncogenic activity.

Product:

Rabbit IgG, 1mg/ml in PBS with 0.02% sodium azide, 50% glycerol, pH7.2

Molecular Weight:

~ 47 kDa

Swiss-Prot:

O96019

Purification&Purity:

The antibody was affinity-purified from rabbit antiserum by affinity-chromatography using epitope-specific immunogen and the purity is > 95% (by SDS-PAGE).

Applications:

WB: 1:500~1:1000

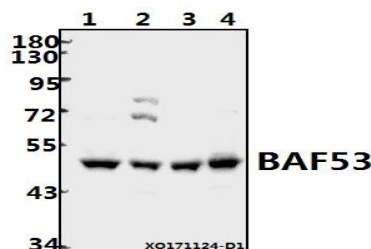
IHC: 1:50~1:200

Storage&Stability:

Store at 4 °C short term. Aliquot and store at -20 °C long term. Avoid freeze-thaw cycles.

Specificity:

BAF53 (W237) polyclonal antibody detects endogenous levels of BAF53 protein.

DATA:

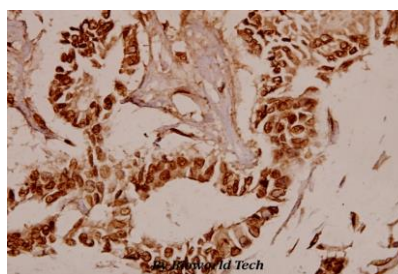
Western blot (WB) analysis of BAF53 (W237) pAb at 1:500 dilution

Lane1:PC3 whole cell lysate(40ug)

Lane2:MCF-7 whole cell lysate(40ug)

Lane3:The Uterus tissue lysate of Rat(40ug)

Lane4:The Uterus tissue lysate of Mouse(40ug)



Immunohistochemistry (IHC) analyzes of BAF53 (W237) pAb in paraffin-embedded human breast carcinoma tissue at 1:50.

Note:

For research use only, not for use in diagnostic procedure.

Bioworld Technology, Inc.

Add: 1660 South Highway 100, Suite 500 St. Louis Park, MN 55416, USA.

Email: info@bioworld.com

Tel: 6123263284

Fax: 6122933841

Bioworld technology, co. Ltd.

Add: No 9, weidi road Qixia District Nanjing, 210046, P. R. China.

Email: info@biogot.com

Tel: 0086-025-68037686

Fax: 0086-025-68035151