

## HMGB1 (A164) polyclonal antibody

Catalog: BS1918

Host: Rabbit

Reactivity: Human, Mouse, Rat

### BackGround:

High mobility group (HMG) proteins 1 and 2 are ubiquitous non-histone components of chromatin. Research suggests that the binding of HMG proteins to DNA induces alterations in the DNA architecture, including DNA bending and unwinding of the helix. HMG proteins synergize with Oct-2, ATF-2, c-Jun and members of the NF $\kappa$ B family to activate transcription. Additional studies indicate that phosphorylation of HMG protein is required to stimulate the transcriptional activity of the protein. Human HMG-1 and HMG-2 each contain two DNA-binding domains, termed HMG boxes. HMG proteins bind singlestranded DNA but induce conformational changes in double-stranded DNA alone.

### Product:

Rabbit IgG, 1mg/ml in PBS with 0.02% sodium azide, 50% glycerol, pH7.2

### Molecular Weight:

~ 25 kDa

### Swiss-Prot:

P09429

### Purification&Purity:

The antibody was affinity-purified from rabbit antiserum by affinity-chromatography using epitope-specific immunogen and the purity is > 95% (by SDS-PAGE).

### Applications:

WB: 1:500~1:1000

IHC: 1:50~1:200

IF: 1:50~1:200

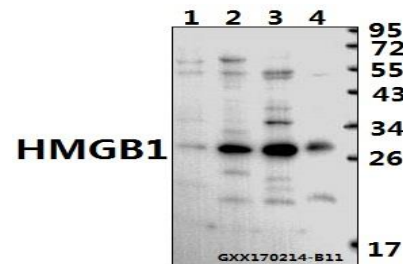
### Storage&Stability:

Store at 4 °C short term. Aliquot and store at -20 °C long term. Avoid freeze-thaw cycles.

### Specificity:

HMGB1 (A164) polyclonal antibody detects endogenous levels of HMGB1 protein.

### DATA:



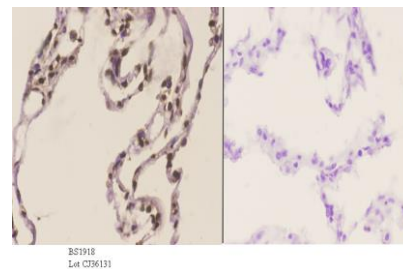
Western blot (WB) analysis of HMGB1 (A164) polyclonal antibody at 1:500 dilution

Lane1:H9C2 whole cell lysate(40ug)

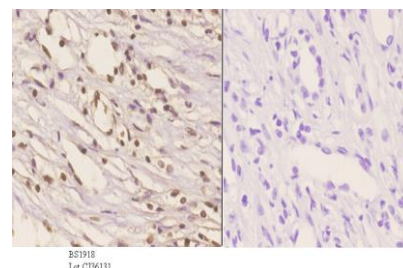
Lane2:CT26 whole cell lysate(40ug)

Lane3:Jurkat whole cell lysate(40ug)

Lane4:HL-60 whole cell lysate(40ug)



Immunohistochemistry (IHC) analyzes of HMGB1 (A164) pAb in paraffin-embedded human lung carcinoma tissue at 1:50. showing nucleus staining. Negative control (the right) Using PBS instead of primary antibody, secondary antibody is Goat Anti-Rabbit IgG-biotin followed by avidin-peroxidase.



Immunohistochemistry (IHC) analyzes of HMGB1 (A164) pAb in paraffin-embedded human kidney carcinoma tissue at 1:50. showing nucleus staining. Negative control (the right) Using PBS instead of primary

### Bioworld Technology, Inc.

Add: 1660 South Highway 100, Suite 500 St. Louis Park, MN 55416, USA.

Email: [info@bioworld.com](mailto:info@bioworld.com)

Tel: 6123263284

Fax: 6122933841

### Bioworld technology, co. Ltd.

Add: No 9, weidi road Qixia District Nanjing, 210046, P. R. China.

Email: [info@biogot.com](mailto:info@biogot.com)

Tel: 0086-025-68037686

Fax: 0086-025-68035151



## PRODUCT DATA SHEET

Bioworld Technology, Inc.

antibody, secondary antibody is Goat Anti-Rabbit IgG-biotin followed by avidin-peroxidase.

**Note:**

For research use only, not for use in diagnostic procedure.

---

**Bioworld Technology, Inc.**

Add: 1660 South Highway 100, Suite 500 St. Louis Park,  
MN 55416, USA.

Email: [info@bioworld.com](mailto:info@bioworld.com)

Tel: 6123263284

Fax: 6122933841

**Bioworld technology, co. Ltd.**

Add: No 9, weidi road Qixia District Nanjing, 210046,  
P. R. China.

Email: [info@biogot.com](mailto:info@biogot.com)

Tel: 0086-025-68037686

Fax: 0086-025-68035151