

GALK1 (E15) polyclonal antibody

Catalog: BS2009

Host: Rabbit

Reactivity: Human, Mouse, Rat

BackGround:

Galactose kinase (GALK1), also often designated galactokinase, is important in the first step of the galactose metabolism pathway. GALK1, which belongs to the GHMP kinase family of proteins, is a crucial enzyme for galactose metabolism. Defects in the gene encoding for galactose kinase, GALK1, can cause galactosemia II, an autosomal recessive disorder characterized by congenital cataracts during infancy, often within the first two weeks of life. In the adult population it can cause presenile cataracts that are secondary to accumulation of galactitol in the lens of the eye.

Product:

Rabbit IgG, 1mg/ml in PBS with 0.02% sodium azide, 50% glycerol, pH7.2

Molecular Weight:

~ 42 kDa

Swiss-Prot:

P51570

Purification&Purity:

The antibody was affinity-purified from rabbit antiserum by affinity-chromatography using epitope-specific immunogen and the purity is > 95% (by SDS-PAGE).

Applications:

WB: 1:500~1:1000

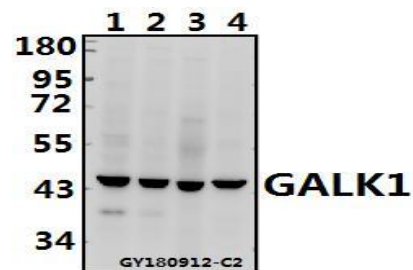
Storage&Stability:

Store at 4 °C short term. Aliquot and store at -20 °C long term. Avoid freeze-thaw cycles.

Specificity:

GALK1 (E15) polyclonal antibody detects endogenous levels of GALK1 protein.

DATA:



Western blot (WB) analysis of GALK1 (E15) polyclonal antibody at 1:500 dilution

Lane1:HCT116 whole cell lysate(40ug)

Lane2:SGC7901 whole cell lysate(40ug)

Lane3:The Lung tissue lysate of Mouse(40ug)

Lane4:PMVEC whole cell lysate(40ug)

Note:

For research use only, not for use in diagnostic procedure.

Bioworld Technology, Inc.

Add: 1660 South Highway 100, Suite 500 St. Louis Park, MN 55416, USA.

Email: info@bioworld.com

Tel: 6123263284

Fax: 6122933841

Bioworld technology, co. Ltd.

Add: No 9, weidi road Qixia District Nanjing, 210046, P. R. China.

Email: info@biogot.com

Tel: 0086-025-68037686

Fax: 0086-025-68035151