

## LT- $\beta$ (V211) polyclonal antibody

Catalog: BS2038

Host: Rabbit

Reactivity: Human, Mouse, Rat

### BackGround:

Tumor necrosis factor (TNF) and lymphotoxin-alpha (LT- $\alpha$ , also known as TNF- $\beta$ ) are members of a family of secreted and cell surface cytokines that participate in the regulation of immune and inflammatory responses. LT- $\beta$  (lymphotoxin-beta or tumor necrosis factor C) is a type II membrane protein with significant homology to TNF, LT- $\alpha$ , and the ligand for the CD40 receptor. LT- $\alpha$  is present on the surface of activated T, B, and LAK cells as a complex with the 33 kDa glycoprotein, LT- $\beta$ . LT- $\beta$ , also expressed by active lymphocytes, forms a heterotrimer with LT- $\alpha$  on the cell surface and anchors LT- $\alpha$  to the cell surface. A TNF receptor-related protein, the LT- $\beta$  receptor (also known as TNFC receptor), is the human receptor for the LT- $\alpha$ /LT- $\beta$  heterotrimer. There are two LT- $\beta$  isoforms expressed in human lymphoid cell lines and non-Hodgkin's lymphomas. The gene which encodes LT- $\beta$  maps to the major histocompatibility complex region on human chromosome 6p21.3.

### Product:

Rabbit IgG, 1mg/ml in PBS with 0.02% sodium azide, 50% glycerol, pH7.2

### Molecular Weight:

~ 25 kDa

### Swiss-Prot:

Q06643

### Purification&Purity:

The antibody was affinity-purified from rabbit antiserum by affinity-chromatography using epitope-specific immunogen and the purity is > 95% (by SDS-PAGE).

### Applications:

WB: 1:500~1:1000

IHC: 1:50~1:200

IF: 1:50~1:200

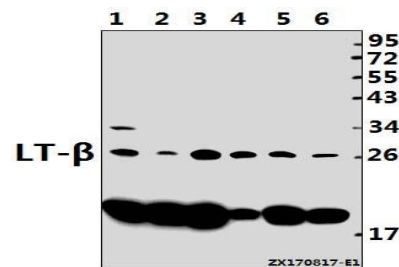
### Storage&Stability:

Store at 4 °C short term. Aliquot and store at -20 °C long term. Avoid freeze-thaw cycles.

### Specificity:

LT- $\beta$  (V211) polyclonal antibody detects endogenous levels of LT- $\beta$  protein.

### DATA:



Western blot (WB) analysis of LT- $\beta$  (V211) pAb at 1:500 dilution

Lane1:H9C2 whole cell lysate(40ug)

Lane2:MEF whole cell lysate(40ug)

Lane3:HeLa whole cell lysate(40ug)

Lane4:HEK293T whole cell lysate(40ug)

Lane5:HepG2 whole cell lysate(40ug)

Lane6:A549 whole cell lysate(40ug)

### Note:

For research use only, not for use in diagnostic procedure.

### Bioworld Technology, Inc.

Add: 1660 South Highway 100, Suite 500 St. Louis Park, MN 55416, USA.

Email: [info@bioworld.com](mailto:info@bioworld.com)

Tel: 6123263284

Fax: 6122933841

### Bioworld technology, co. Ltd.

Add: No 9, weidi road Qixia District Nanjing, 210046, P. R. China.

Email: [info@biogol.com](mailto:info@biogol.com)

Tel: 0086-025-68037686

Fax: 0086-025-68035151