

## PSMD2 (R34) polyclonal antibody

Catalog: BS2063

Host: Rabbit

Reactivity: Human

### BackGround:

PSMD2 (proteasome (prosome, macropain) 26S subunit, non-ATPase 2), also known as S2, TRAP2 (tumor necrosis factor type 1 receptor-associated protein 2) or p97, is a regulatory component of the 26S proteasome. It is expressed in skeletal muscle, brain, liver, placenta, kidney, pancreas, lung and heart. PSMD2 is one of the non-ATPase regulatory subunits of the 19S regulator lid and is implicated in substrate recognition and binding.

### Product:

Rabbit IgG, 1mg/ml in PBS with 0.02% sodium azide, 50% glycerol, pH7.2

### Molecular Weight:

~ 100 kDa

### Swiss-Prot:

Q13200

### Purification&Purity:

The antibody was affinity-purified from rabbit antiserum by affinity-chromatography using epitope-specific immunogen and the purity is > 95% (by SDS-PAGE).

### Applications:

WB: 1:500~1:1000

IHC: 1:50~1:200

### Storage&Stability:

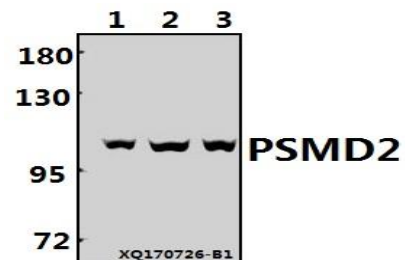
Store at 4 °C short term. Aliquot and store at -20 °C long term. Avoid freeze-thaw cycles.

### Specificity:

PSMD2 (R34) polyclonal antibody detects endogenous

levels of PSMD2 protein.

### DATA:

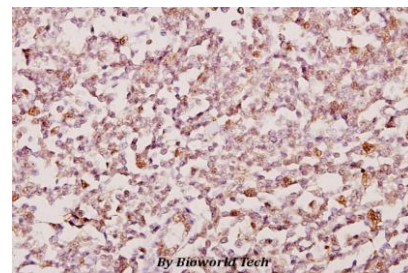


Western blot (WB) analysis of PSMD2 (R34) pAb at 1:500 dilution

Lane1:MCF-7 whole cell lysate(40ug)

Lane2:HepG2 whole cell lysate(40ug)

Lane3:HEK293T whole cell lysate(40ug)



Immunohistochemistry (IHC) analyzes of PSMD2 (R34) pAb in paraffin-embedded human tonsil cancer tissue at 1:50.

### Note:

For research use only, not for use in diagnostic procedure.

### Bioworld Technology, Inc.

Add: 1660 South Highway 100, Suite 500 St. Louis Park, MN 55416, USA.

Email: [info@bioworld.com](mailto:info@bioworld.com)

Tel: 6123263284

Fax: 6122933841

### Bioworld technology, co. Ltd.

Add: No 9, weidi road Qixia District Nanjing, 210046, P. R. China.

Email: [info@biogot.com](mailto:info@biogot.com)

Tel: 0086-025-68037686

Fax: 0086-025-68035151