

## C/EBP- $\epsilon$ (K220) polyclonal antibody

Catalog: BS2074

Host: Rabbit

Reactivity: Human, Mouse, Rat

### BackGround:

C/EBP  $\alpha$  regulates gene expression in a variety of tissues including liver, adipose, lung and intestine. C/EBP  $\alpha$  uses a bipartite structural motif to bind DNA. Two protein chains dimerize through a set of amphipathic  $\alpha$  helices termed the leucine zipper. Highly basic polypeptide regions emerge from the zipper to form a linked set of DNA contact surfaces. C/EBP  $\alpha$  appears to function exclusively in terminally-differentiated, growth-arrested cells. Additional family members include C/EBP  $\beta$ , C/EBP  $\gamma$ , C/EBP  $\delta$  and C/EBP  $\epsilon$ , all of which exhibit similar DNA-binding specificities and affinities to C/EBP  $\alpha$ . Furthermore, C/EBP  $\beta$  and C/EBP  $\delta$  readily form heterodimers both with each other as well as with C/EBP  $\alpha$ .

### Product:

Rabbit IgG, 1mg/ml in PBS with 0.02% sodium azide, 50% glycerol, pH7.2

### Molecular Weight:

~ 30, 45 kDa

### Swiss-Prot:

Q15744

### Purification&Purity:

The antibody was affinity-purified from rabbit antiserum by affinity-chromatography using epitope-specific immunogen and the purity is > 95% (by SDS-PAGE).

### Applications:

IHC: 1:50~1:200

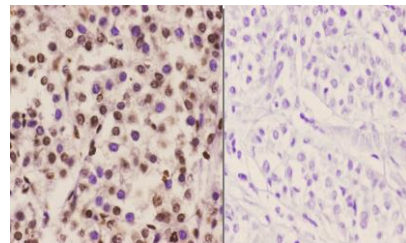
### Storage&Stability:

Store at 4 °C short term. Aliquot and store at -20 °C long term. Avoid freeze-thaw cycles.

### Specificity:

C/EBP- $\epsilon$  (K220) polyclonal antibody detects endogenous levels of C/EBP- $\epsilon$  protein.

### DATA:



BS2074  
Lot: C36151

Immunohistochemistry (IHC) analyzes of C/EBP- $\epsilon$  (K220) pAb in paraffin-embedded human liver carcinoma tissue at 1:50. showing nucleus staining. Negative control (the right) Using PBS instead of primary antibody, secondary antibody is Goat Anti-Rabbit IgG-biotin followed by avidin-peroxidase.

### Note:

For research use only, not for use in diagnostic procedure.

### Bioworld Technology, Inc.

Add: 1660 South Highway 100, Suite 500 St. Louis Park, MN 55416, USA.

Email: [info@bioworld.com](mailto:info@bioworld.com)

Tel: 6123263284

Fax: 6122933841

### Bioworld technology, co. Ltd.

Add: No 9, weidi road Qixia District Nanjing, 210046, P. R. China.

Email: [info@biogot.com](mailto:info@biogot.com)

Tel: 0086-025-68037686

Fax: 0086-025-68035151