

Sideroflexin-4 (G12) polyclonal antibody

Catalog: BS2090

Host: Rabbit

Reactivity: Human

BackGround:

Sideroflexin-4, potential iron transporter. SFXN4 is an uncharacterized mitochondrial protein that localizes to the mitochondrial inner membrane. Modulation of SFXN4 alters mitochondrial respiration by affecting iron-sulfur cluster biogenesis. SFXN4 may be a potential druggable target in ovarian cancer.

Product:

Rabbit IgG, 1mg/ml in PBS with 0.02% sodium azide, 50% glycerol, pH7.2

Molecular Weight:

~ 38 kDa

Swiss-Prot:

Q6P4A7

Purification&Purity:

The antibody was affinity-purified from rabbit antiserum by affinity-chromatography using epitope-specific immunogen and the purity is > 95% (by SDS-PAGE).

Applications:

WB: 1:500~1:1000

Storage&Stability:

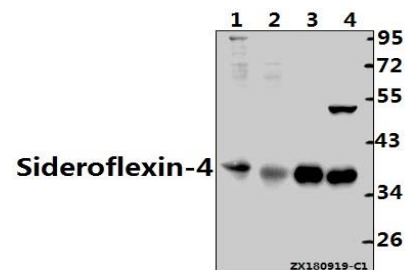
Store at 4 °C short term. Aliquot and store at -20 °C long

term. Avoid freeze-thaw cycles.

Specificity:

Sideroflexin-4 (G12) polyclonal antibody detects endogenous levels of Sideroflexin-4 protein.

DATA:



Western blot (WB) analysis of Sideroflexin-4 (G12) polyclonal antibody at 1:1000 dilution

Lane1:HCT116 whole cell lysate(40ug)

Lane2:HepG2 whole cell lysate(40ug)

Lane3:L02 whole cell lysate(10ug)

Lane4:H1792 whole cell lysate(10ug)

Note:

For research use only, not for use in diagnostic procedure.

Bioworld Technology, Inc.

Add: 1660 South Highway 100, Suite 500 St. Louis Park, MN 55416, USA.

Email: info@bioworld.com

Tel: 6123263284

Fax: 6122933841

Bioworld technology, co. Ltd.

Add: No 9, weidi road Qixia District Nanjing, 210046, P. R. China.

Email: info@biogot.com

Tel: 0086-025-68037686

Fax: 0086-025-68035151