

## DCLK2 (E8) polyclonal antibody

Catalog: BS2095

Host: Rabbit

Reactivity: Human, Mouse, Rat

### BackGround:

Protein kinase with a significantly reduced C(a2+)/CAM affinity and dependence compared to other members of the CaMK family. May play a role in the down-regulation of CRE-dependent gene activation probably by phosphorylation of the CREB coactivator CRRC2/TORC2 and the resulting retention of TORC2 in the cytoplasm.

### Product:

Rabbit IgG, 1mg/ml in PBS with 0.02% sodium azide, 50% glycerol, pH7.2

### Molecular Weight:

~ 84 kDa

### Swiss-Prot:

Q8N568

### Purification&Purity:

The antibody was affinity-purified from rabbit antiserum by affinity-chromatography using epitope-specific immunogen and the purity is > 95% (by SDS-PAGE).

### Applications:

WB: 1:500~1:1000

### Storage&Stability:

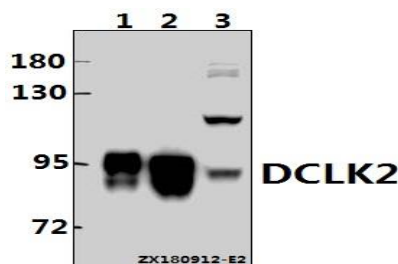
Store at 4 °C short term. Aliquot and store at -20 °C long

term. Avoid freeze-thaw cycles.

### Specificity:

DCLK2 (E8) polyclonal antibody detects endogenous levels of DCLK2 protein.

### DATA:



Western blot (WB) analysis of DCLK2 (E8) polyclonal antibody at 1:500 dilution

Lane1:The Brain tissue lysate of Mouse(10ug)

Lane2:The Brain tissue lysate of Rat(40ug)

Lane3:Hela whole cell lysate(40ug)

### Note:

For research use only, not for use in diagnostic procedure.

### Bioworld Technology, Inc.

Add: 1660 South Highway 100, Suite 500 St. Louis Park, MN 55416, USA.

Email: [info@bioworld.com](mailto:info@bioworld.com)

Tel: 6123263284

Fax: 6122933841

### Bioworld technology, co. Ltd.

Add: No 9, weidi road Qixia District Nanjing, 210046, P. R. China.

Email: [info@biogot.com](mailto:info@biogot.com)

Tel: 0086-025-68037686

Fax: 0086-025-68035151