

## Septin 1 (D205) polyclonal antibody

Catalog: BS2111

Host: Rabbit

Reactivity: Human, Mouse, Rat

### BackGround:

The septins are a family of GTPase enzymes, some of which are required for cytokinesis and others of which are associated with exocytosis. Members of the septin family can form heteropolymer complexes and also play a role in the organization of new growth in organisms. The transcriptional regulation of all septins is complex, resulting in alternatively spliced variants. At least three septins (Septin 1, 2 and 4) are associated with a Tau-based paired helical filament core and may contribute to the formation of neurofibrillary tangle as integral constituents of paired helical filaments. Septin 3 (G-Septin), a GTP-binding protein, is highly expressed in brain and is regulated by protein kinase G in neurons. The human SEPT4 (H5/PNUTL2/CDCrREL-2) gene encodes ARTS (for apoptosis-related protein in the TGF $\beta$  signaling pathway), which is expressed in many cells and acts to enhance cell death induced by TGF $\beta$  or, to a lesser extent, by other apoptotic agents.

### Product:

Rabbit IgG, 1mg/ml in PBS with 0.02% sodium azide, 50% glycerol, pH7.2

### Molecular Weight:

~ 42 kDa

### Swiss-Prot:

Q8WYJ6

### Purification&Purity:

The antibody was affinity-purified from rabbit antiserum by affinity-chromatography using epitope-specific im-

munogen and the purity is > 95% (by SDS-PAGE).

### Applications:

WB: 1:500~1:1000

IHC: 1:50~1:200

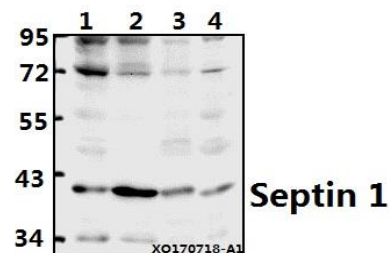
### Storage&Stability:

Store at 4 °C short term. Aliquot and store at -20 °C long term. Avoid freeze-thaw cycles.

### Specificity:

Septin 1 (D205) polyclonal antibody detects endogenous levels of Septin 1 protein.

### DATA:



Western blot (WB) analysis of Septin 1 (D205) pAb at 1:1000 dilution

Lane1:K562 whole cell lysate(40ug)

Lane2:SKOV3 whole cell lysate(40ug)

Lane3:PC12 whole cell lysate(40ug)

Lane4:3T3-L1 whole cell lysate(40ug)

### Note:

For research use only, not for use in diagnostic procedure.

### Bioworld Technology, Inc.

Add: 1660 South Highway 100, Suite 500 St. Louis Park, MN 55416, USA.

Email: [info@bioworld.com](mailto:info@bioworld.com)

Tel: 6123263284

Fax: 6122933841

### Bioworld technology, co. Ltd.

Add: No 9, weidi road Qixia District Nanjing, 210046, P. R. China.

Email: [info@biogot.com](mailto:info@biogot.com)

Tel: 0086-025-68037686

Fax: 0086-025-68035151