

BRMS-1 (E43) polyclonal antibody

Catalog: BS2144

Host: Rabbit

Reactivity: Human, Mouse, Rat

Background:

Breast cancer metastasis-suppressor 1 (BRMS1) acts as a mediator of metastasis suppression in several types of cancer including ovarian, lung, bladder, and murine mammary. BRMS1 mRNA is expressed in various tissues, including ovary, prostate, testis, and colon, but the protein is primarily detected in term placenta. BRMS1 suppresses metastasis without inhibiting tumorigenicity by modifying several metastasis-associated phenotypes. BRMS1 may participate in transcriptional regulation by binding to the mSin3/histone deacetylase complex. The expression of BRMS1 in certain cells increases connexin Cx43 expression and reduces connexin Cx32 expression. This produces a gap junction that increases intercellular communication, similar to those found in normal breast tissue. BRMS1 is stabilized by Hsp90 and may inhibit NFκB activity.

Product:

Rabbit IgG, 1mg/ml in PBS with 0.02% sodium azide, 50% glycerol, pH7.2

Molecular Weight:

~ 28 kDa

Swiss-Prot:

Q9HCU9

Purification&Purity:

The antibody was affinity-purified from rabbit antiserum

by affinity-chromatography using epitope-specific immunogen and the purity is > 95% (by SDS-PAGE).

Applications:

IHC: 1:50~1:200

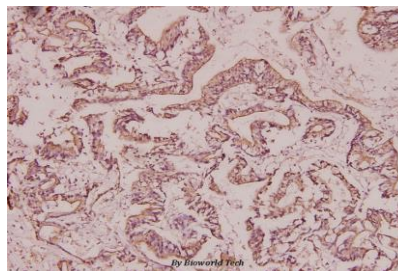
Storage&Stability:

Store at 4 °C short term. Aliquot and store at -20 °C long term. Avoid freeze-thaw cycles.

Specificity:

BRMS-1 (E43) polyclonal antibody detects endogenous levels of BRMS-1 protein

DATA:



Immunohistochemistry (IHC) analyzes of BRMS-1 (E43) pAb in paraffin-embedded human colorectal cancer carcinoma tissue at 1:100.

Note:

For research use only, not for use in diagnostic procedure.

Bioworld Technology, Inc.

Add: 1660 South Highway 100, Suite 500 St. Louis Park, MN 55416, USA.

Email: info@bioworld.com

Tel: 6123263284

Fax: 6122933841

Bioworld technology, co. Ltd.

Add: No 9, weidi road Qixia District Nanjing, 210046, P. R. China.

Email: info@biogot.com

Tel: 0086-025-68037686

Fax: 0086-025-68035151