

EKI2 (W78) polyclonal antibody

Catalog: BS2149

Host: Rabbit

Reactivity: Human, Mouse, Rat

BackGround:

Ethanolamine kinase 2, highly specific for ethanolamine phosphorylation. Does not have choline kinase activity.

Product:

Rabbit IgG, 1mg/ml in PBS with 0.02% sodium azide, 50% glycerol, pH7.2

Molecular Weight:

~ 55 kDa

Swiss-Prot:

Q9NVF9

Purification&Purity:

The antibody was affinity-purified from rabbit antiserum by affinity-chromatography using epitope-specific immunogen and the purity is > 95% (by SDS-PAGE).

Applications:

WB: 1:500~1:1000

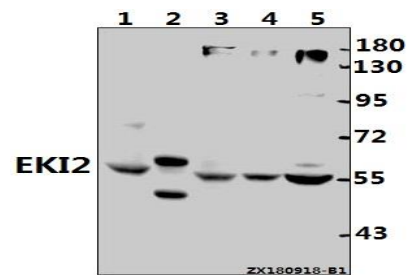
Storage&Stability:

Store at 4 °C short term. Aliquot and store at -20 °C long term. Avoid freeze-thaw cycles.

Specificity:

EKI2 (W78) polyclonal antibody detects endogenous lev-

els of EKI2 protein.

DATA:

Western blot (WB) analysis of EKI2 (W78) polyclonal antibody at 1:500 dilution

Lane1:PC12 whole cell lysate(40ug)

Lane2:The Kidney tissue lysate of Mouse(20ug)

Lane3:A2780 whole cell lysate(40ug)

Lane4:L02 whole cell lysate(40ug)

Lane5:HEK293T whole cell lysate(40ug)

Note:

For research use only, not for use in diagnostic procedure.

Bioworld Technology, Inc.

Add: 1660 South Highway 100, Suite 500 St. Louis Park, MN 55416, USA.

Email: info@bioworld.com

Tel: 6123263284

Fax: 6122933841

Bioworld technology, co. Ltd.

Add: No 9, weidi road Qixia District Nanjing, 210046, P. R. China.

Email: info@biogot.com

Tel: 0086-025-68037686

Fax: 0086-025-68035151