

## Cox-11 (F80) polyclonal antibody

Catalog: BS2185

Host: Rabbit

Reactivity: Human, Mouse, Rat

**BackGround:**

Cytochrome c oxidase (COX) is the terminal enzyme in the electron transfer chain, functioning as a transmembrane proton pump that builds an electrochemical gradient with chemical energy from the reduction of O<sub>2</sub>. Cytochrome c oxidase assembly protein COX11 is an intracellular mitochondrial membrane protein necessary for the construction of an active COX complex. COX11 contains a single transmembrane helix downstream of the N-terminal, mitochondrial targeting sequence and a C-terminal Cu(I)-binding domain. The assembly of COX requires the delivery of metal cofactors. Along with COX12 and SCO1/2, COX11 acts as a metal ion chaperone necessary for copper insertion into CuA and CuB redox-active copper centers of COX in eukaryotes.

**Product:**

Rabbit IgG, 1mg/ml in PBS with 0.02% sodium azide, 50% glycerol, pH7.2

**Molecular Weight:**

~ 31 kDa

**Swiss-Prot:**

Q9Y6N1

**Purification&Purity:**

The antibody was affinity-purified from rabbit antiserum by affinity-chromatography using epitope-specific im-

munogen and the purity is > 95% (by SDS-PAGE).

**Applications:**

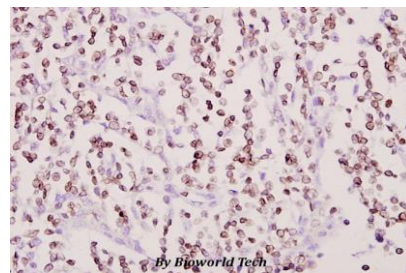
IHC: 1:50~1:200

**Storage&Stability:**

Store at 4 °C short term. Aliquot and store at -20 °C long term. Avoid freeze-thaw cycles.

**Specificity:**

Cox-11 (F80) polyclonal antibody detects endogenous levels of Cox-11 protein.

**DATA:**

Immunohistochemistry (IHC) analyzes of Cox-11 (F80) pAb in paraffin-embedded human tonsil cancer tissue at 1:50.

**Note:**

For research use only, not for use in diagnostic procedure.

**Bioworld Technology, Inc.**

Add: 1660 South Highway 100, Suite 500 St. Louis Park, MN 55416, USA.

Email: [info@bioworld.com](mailto:info@bioworld.com)

Tel: 6123263284

Fax: 6122933841

**Bioworld technology, co. Ltd.**

Add: No 9, weidi road Qixia District Nanjing, 210046, P. R. China.

Email: [info@biogot.com](mailto:info@biogot.com)

Tel: 0086-025-68037686

Fax: 0086-025-68035151