

## CYP1A1/2 (R98) polyclonal antibody

Catalog: BS2188

Host: Rabbit

Reactivity: Human, Mouse, Rat

### BackGround:

P450 enzymes constitute a family of monooxygenase enzymes that are involved in the metabolism of a wide array of endogenous levels of and xenobiotic compounds. Several P450 enzymes have been classified by sequence similarities as members of the CYP1A and CYP2A subfamilies. NADPH cytochrome P450 reductase is a microsomal enzyme responsible for the transfer of electrons from NADPH to cytochrome P450 enzymes during the P450 catalytic cycle. NADPH cytochrome P450 reductase is localized to the endoplasmic reticulum where it is also able to transfer electrons to heme oxygenase and cytochrome b5.

### Product:

Rabbit IgG, 1mg/ml in PBS with 0.02% sodium azide, 50% glycerol, pH7.2

### Molecular Weight:

~ 58 kDa

### Swiss-Prot:

P04798/P05177

### Purification&Purity:

The antibody was affinity-purified from rabbit antiserum by affinity-chromatography using epitope-specific immunogen and the purity is > 95% (by SDS-PAGE).

### Applications:

IHC: 1:50~1:200

IF: 1:50~1:200

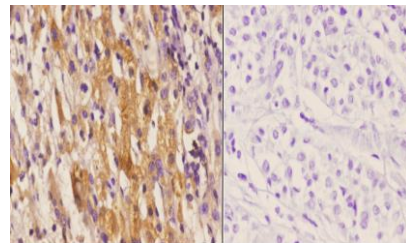
### Storage&Stability:

Store at 4 °C short term. Aliquot and store at -20 °C long term. Avoid freeze-thaw cycles.

### Specificity:

CYP1A1/2 (R98) polyclonal antibody detects endogenous levels of CYP1A1 and CYP1A2 protein.

### DATA:



Immunohistochemistry (IHC) analyzes of CYP1A1/2 (R98) pAb in paraffin-embedded human liver carcinoma tissue at 1:50. showing cytoplasmic staining. Negative control (the right) Using PBS instead of primary antibody, secondary antibody is Goat Anti-Rabbit IgG-biotin followed by avidin-peroxidase.

### Note:

For research use only, not for use in diagnostic procedure.

### Bioworld Technology, Inc.

Add: 1660 South Highway 100, Suite 500 St. Louis Park, MN 55416, USA.

Email: [info@bioworld.com](mailto:info@bioworld.com)

Tel: 6123263284

Fax: 6122933841

### Bioworld technology, co. Ltd.

Add: No 9, weidi road Qixia District Nanjing, 210046, P. R. China.

Email: [info@biogot.com](mailto:info@biogot.com)

Tel: 0086-025-68037686

Fax: 0086-025-68035151