

CYP3A4/5 (F386) polyclonal antibody

Catalog: BS2197

Host: Rabbit

Reactivity: Human, Mouse, Rat

Background:

Cytochrome P450 3A (CYP3A) genes encode monooxygenases—enzymes which catalyze drug metabolism and the synthesis of cholesterol, steroids and other lipids. CYP3A, the most abundant p450 enzyme in human liver, is responsible for the metabolism of more than 50% of all clinical drugs. CYP3A family members localize in organs that associate with drug disposition, including the liver, gastrointestinal tract and kidney. The CYP3A cluster maps to gene locus 7q21.3-q22.1 and consists of four genes (CYP3A4, CYP3A5, CYP3A7 and CYP3A43) and two pseudogenes (CYP3A5P1 and CYP3A5P2). CYP3A4 is abundant in the endoplasmic reticulum of liver cells and upper intestinal enterocytes. CYP3A4 expression is inducible by glucocorticoids pharmacological agents.

Product:

Rabbit IgG, 1mg/ml in PBS with 0.02% sodium azide, 50% glycerol, pH7.2

Molecular Weight:

~ 57 kDa

Swiss-Prot:

P08684/P20815

Purification&Purity:

The antibody was affinity-purified from rabbit antiserum by affinity-chromatography using epitope-specific immunogen and the purity is > 95% (by SDS-PAGE).

Applications:

WB: 1:500~1:1000

IHC: 1:50~1:200

IF: 1:50~1:200

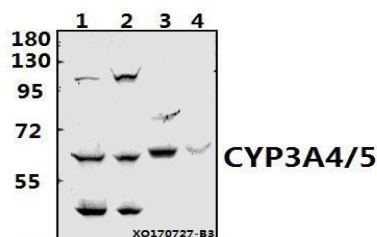
Storage&Stability:

Store at 4 °C short term. Aliquot and store at -20 °C long term. Avoid freeze-thaw cycles.

Specificity:

CYP3A4/5 (F386) polyclonal antibody detects endogenous levels of CYP3A4/5 protein.

DATA:



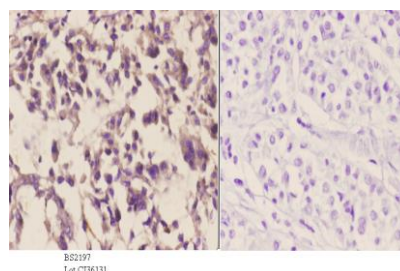
Western blot (WB) analysis of CYP3A4/5 (F386) pAb at 1:500 dilution

Lane1:HepG2 whole cell lysate(40ug)

Lane2:A549 whole cell lysate(40ug)

Lane3:The Liver tissue lysate of Rat(40ug)

Lane4:The Liver tissue lysate of Mouse(40ug)



Immunohistochemistry (IHC) analyzes of CYP3A4/5 (F386) pAb in paraffin-embedded human liver carcinoma tissue at 1:50. showing cytoplasmic staining. Negative control (the right) Using PBS instead of primary antibody, secondary antibody is Goat Anti-Rabbit IgG-biotin followed by avidin-peroxidase.

Note:

For research use only, not for use in diagnostic procedure.

Bioworld Technology, Inc.

Add: 1660 South Highway 100, Suite 500 St. Louis Park, MN 55416, USA.

Email: info@bioworld.com

Tel: 6123263284

Fax: 6122933841

Bioworld technology, co. Ltd.

Add: No 9, weidi road Qixia District Nanjing, 210046, P. R. China.

Email: info@biogot.com

Tel: 0086-025-68037686

Fax: 0086-025-68035151