

ChemR23 (R249) polyclonal antibody

Catalog: BS2199

Host: Rabbit

Reactivity: Human, Mouse, Rat

BackGround:

Chemokine receptor-like 1 (also designated G protein-coupled receptor DEZ or ChemR23) belongs to the G protein-coupled receptor 1 family. It is an integral membrane protein functioning as a receptor, possibly a chemotactic peptide receptor. It also acts as a co-receptor for various SIV strains and for a primary HIV-1 strain. ChemR23 is highly expressed in developing osseous and cartilaginous tissue, brain, kidney, gastrointestinal tissues and myeloid tissue, as well as in adult parathyroid glands.

Product:

Rabbit IgG, 1mg/ml in PBS with 0.02% sodium azide, 50% glycerol, pH7.2

Molecular Weight:

~ 50 kDa

Swiss-Prot:

Q99788

Purification&Purity:

The antibody was affinity-purified from rabbit antiserum by affinity-chromatography using epitope-specific immunogen and the purity is > 95% (by SDS-PAGE).

Applications:

WB: 1:500~1:1000

IHC: 1:50~1:200

IF: 1:50~1:200

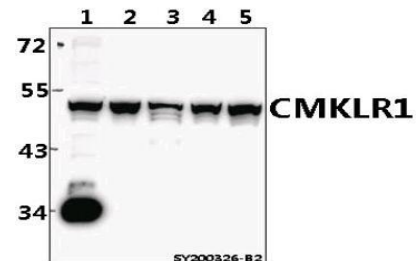
Storage&Stability:

Store at 4 °C short term. Aliquot and store at -20 °C long term. Avoid freeze-thaw cycles.

Specificity:

ChemR23 (R249) polyclonal antibody detects endogenous levels of ChemR23 protein.

DATA:



Western blot (WB) analysis of CMKLR1 pAb at 1:500 dilution

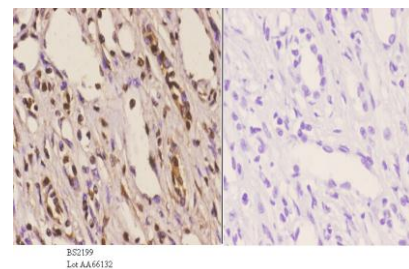
Lane1:RAW264.7 whole cell lysate(40ug)

Lane2:PMVEC whole cell lysate(40ug)

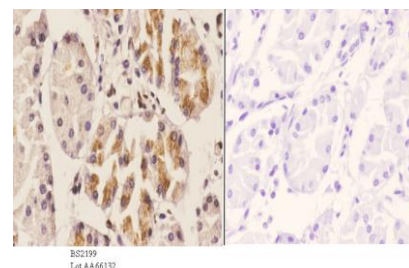
Lane3:HUT78 whole cell lysate(40ug)

Lane4:A549 whole cell lysate(40ug)

Lane5:LO2 whole cell lysate(40ug)



Immunohistochemistry (IHC) analyzes of ChemR23 (R249) pAb in paraffin-embedded human kidney carcinoma tissue at 1:50. showing cytoplasmic and nucleus staining. Negative control (the right) Using PBS instead of primary antibody, secondary antibody is Goat Anti-Rabbit IgG-biotin followed by avidin-peroxidase.



Immunohistochemistry (IHC) analyzes of ChemR23 (R249) pAb in paraffin-embedded human stomach carcinoma tissue at 1:50. showing cytoplasmic and nucleus staining. Negative control (the right) Using PBS instead of primary antibody, secondary antibody is Goat An-

Bioworld Technology, Inc.

Add: 1660 South Highway 100, Suite 500 St. Louis Park, MN 55416, USA.

Email: info@bioworld.com

Tel: 6123263284

Fax: 6122933841

Bioworld technology, co. Ltd.

Add: No 9, weidi road Qixia District Nanjing, 210046, P. R. China.

Email: info@biogot.com

Tel: 0086-025-68037686

Fax: 0086-025-68035151



PRODUCT DATA SHEET

Bioworld Technology, Inc.

ti-Rabbit IgG-biotin followed by avidin-peroxidase.

For research use only, not for use in diagnostic procedure.

Note:

Bioworld Technology, Inc.

Add: 1660 South Highway 100, Suite 500 St. Louis Park,
MN 55416, USA.

Email: info@bioworld.com

Tel: 6123263284

Fax: 6122933841

Bioworld technology, co. Ltd.

Add: No 9, weidi road Qixia District Nanjing, 210046,
P. R. China.

Email: info@biogot.com

Tel: 0086-025-68037686

Fax: 0086-025-68035151