

ATF3 (N159) polyclonal antibody

Catalog: BS2261

Host: Rabbit

Reactivity: Human,Rat

Background:

Activating transcription factor 3 is a member of the mammalian activation transcription factor/cAMP responsive element-binding (CREB) protein family of transcription factors. It encodes a protein with a calculated molecular mass of 22 kD. ATF3 represses rather than activates transcription from promoters with ATF binding elements. An alternatively spliced form of ATF3 (ATF3 delta Zip) encodes a truncated form ATF3 protein lacking the leucine zipper protein-dimerization motif and does not bind to DNA. In contrast to ATF3, ATF3 delta Zip stimulates transcription presumably by sequestering inhibitory co-factors away from the promoter. It is possible that alternative splicing of the ATF3 gene may be physiologically important in the regulation of target genes. Three transcript variants encoding two different isoforms have been found for this gene.

Product:

Rabbit IgG, 1mg/ml in PBS with 0.02% sodium azide, 50% glycerol, pH7.2

Molecular Weight:

~ 24 kDa

Swiss-Prot:

P18847

Purification&Purity:

The antibody was affinity-purified from rabbit antiserum by affinity-chromatography using epitope-specific immunogen and the purity is > 95% (by SDS-PAGE).

Applications:

WB: 1:1000~1:2000

IHC: 1:50~1:200

Storage&Stability:

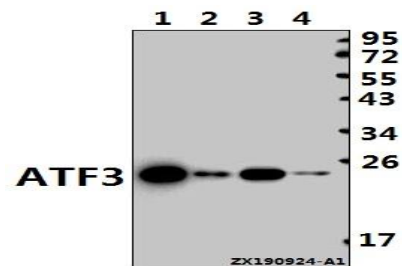
Store at 4 °C short term. Aliquot and store at -20 °C long term. Avoid freeze-thaw cycles.

Specificity:

ATF-3 (N159) polyclonal antibody detects endogenous

levels of ATF-3 protein.

DATA:



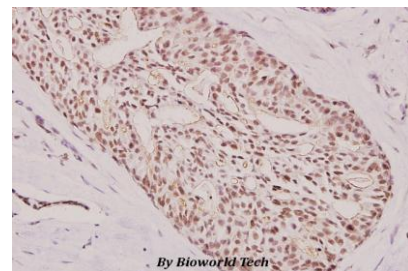
Western blot (WB) analysis of ATF3 (N159) pAb at 1:500 dilution

Lane1:L02 whole cell lysate(40ug)

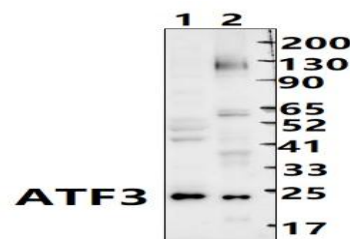
Lane2:SGC7901 whole cell lysate(40ug)

Lane3:A549 whole cell lysate(40ug)

Lane4:HEK293T whole cell lysate(40ug)



Immunohistochemistry (IHC) analyzes of ATF3 (N159) pAb in paraffin-embedded human breast carcinoma tissue at 1:100.



Western blot (WB) analysis of ATF3 (N159) at 1:1000 dilution

Lane1:The heart tissue lysate of Rat(30ug)

Lane2:HepG2 whole cell lysate(30ug)

Note:

For research use only, not for use in diagnostic procedure.

Bioworld Technology, Inc.

Add: 1660 South Highway 100, Suite 500 St. Louis Park, MN 55416, USA.

Email: info@bioworld.com

Tel: 6123263284

Fax: 6122933841

Bioworld technology, co. Ltd.

Add: No 9, weidi road Qixia District Nanjing, 210046, P. R. China.

Email: info@biogot.com

Tel: 0086-025-68037686

Fax: 0086-025-68035151



PRODUCT DATA SHEET

Bioworld Technology, Inc.

Bioworld Technology, Inc.

Add: 1660 South Highway 100, Suite 500 St. Louis Park,
MN 55416, USA.

Email: info@bioworld.com

Tel: 6123263284

Fax: 6122933841

Bioworld technology, co. Ltd.

Add: No 9, weidi road Qixia District Nanjing, 210046,
P. R. China.

Email: info@biogot.com

Tel: 0086-025-68037686

Fax: 0086-025-68035151