

## Per3 (P2) polyclonal antibody

Catalog: BS2288

Host: Rabbit

Reactivity: Human, Mouse, Rat

### Background:

Biological timepieces called circadian clocks are responsible for the regulation of hormonal rhythms, sleep cycles and other behaviors. The suprachiasmatic nucleus (SCN), which is located in the brain, was the first mammalian circadian clock to be discovered. A number of transcription factors appearing to be molecular components of the SCN clock have been identified. Mutations within the Clock gene increase the length of the endogenous period and cause a loss of rhythmicity of circadian oscillations. Three mammalian period proteins, designated Per1, Per2 and Per3, exhibit circadian rhythms in the SCN. During subjective night, Per1 and Per2 RNA levels increase in response to light pulses while Per3 RNA levels show no change in response to light pulses. Tim, for timeless, interacts with Per1 as well as Per2; and Tim and Per1 negatively regulate Clock-BMAL1-induced transcription.

### Product:

Rabbit IgG, 1mg/ml in PBS with 0.02% sodium azide, 50% glycerol, pH7.2

### Molecular Weight:

~ 43, 132 kDa

### Swiss-Prot:

P56645/Q8TAR6

### Purification&Purity:

The antibody was affinity-purified from rabbit antiserum by affinity-chromatography using epitope-specific immunogen and the purity is > 95% (by SDS-PAGE).

### Applications:

WB: 1:500~1:1000

IHC: 1:50~1:200

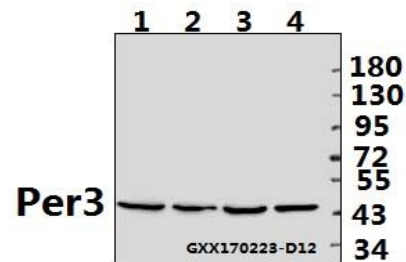
### Storage&Stability:

Store at 4 °C short term. Aliquot and store at -20 °C long term. Avoid freeze-thaw cycles.

### Specificity:

Per3 (P2) polyclonal antibody detects endogenous levels of Per3 protein .

### DATA:



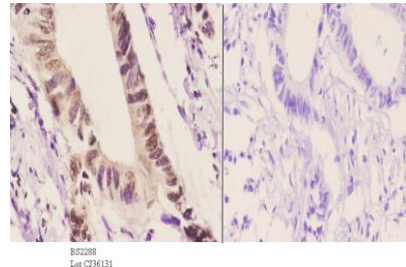
Western blot (WB) analysis of Per3 (P2) polyclonal antibody at 1:500 dilution

Lane1:L02 whole cell lysate(40ug)

Lane2:HEK293T whole cell lysate(40ug)

Lane3:AML-12 whole cell lysate(40ug)

Lane4:H9C2 whole cell lysate(40ug)



Immunohistochemistry (IHC) analyzes of Per3 (P2) pAb in paraffin-embedded human rectum carcinoma tissue at 1:50. showing cytoplasmic and nucleus staining. Negative control (the right) Using PBS instead of primary antibody, secondary antibody is Goat Anti-Rabbit IgG-biotin followed by avidin-peroxidase.

### Note:

For research use only, not for use in diagnostic procedure.

### Bioworld Technology, Inc.

Add: 1660 South Highway 100, Suite 500 St. Louis Park, MN 55416, USA.

Email: [info@bioworld.com](mailto:info@bioworld.com)

Tel: 6123263284

Fax: 6122933841

### Bioworld technology, co. Ltd.

Add: No 9, weidi road Qixia District Nanjing, 210046, P. R. China.

Email: [info@biogot.com](mailto:info@biogot.com)

Tel: 0086-025-68037686

Fax: 0086-025-68035151