

CDK10 (E63) polyclonal antibody

Catalog: BS2312

Host: Rabbit

Reactivity: Human, Mouse, Rat

Background:

Cdk10, also called PISSLRE, is a Cdc2-related kinase whose gene has been shown to encode two isoforms, each having a different function within the cell cycle. Although the two isoforms share nearly identical amino acid sequences, they differ at the C- and N- terminals. One Cdk isoform interacts with the transcription factor Ets-2, thereby modulating its transactivation activity, while the other is thought to have a role at the G2/M transition. Cdk10 mRNA has been shown to have the highest expression in lung, liver and kidney tissue, with gene up-regulation implicated in cases of non-Hodgkin's follicular lymphoma.

Product:

Rabbit IgG, 1mg/ml in PBS with 0.02% sodium azide, 50% glycerol, pH7.2

Molecular Weight:

~ 43 kDa

Swiss-Prot:

Q15131

Purification&Purity:

The antibody was affinity-purified from rabbit antiserum by affinity-chromatography using epitope-specific immunogen and the purity is > 95% (by SDS-PAGE).

Applications:

IHC: 1:50~1:200

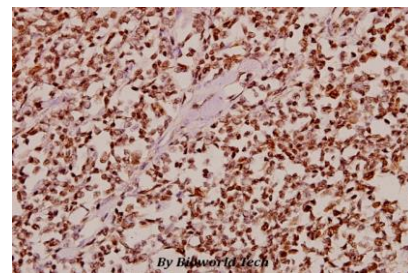
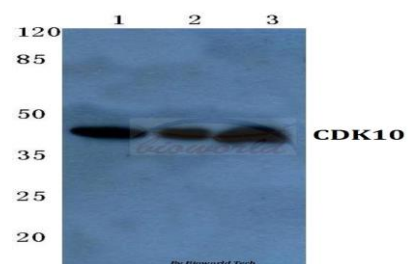
Storage&Stability:

Store at 4 °C short term. Aliquot and store at -20 °C long term. Avoid freeze-thaw cycles.

Specificity:

Cdk10 (E63) polyclonal antibody detects endogenous levels of Cdk10 protein.

DATA:



Immunohistochemistry (IHC) analyzes of CDK10 (E63) pAb in paraffin-embedded human tonsil carcinoma tissue at 1:50.

Note:

For research use only, not for use in diagnostic procedure.

Bioworld Technology, Inc.

Add: 1660 South Highway 100, Suite 500 St. Louis Park, MN 55416, USA.

Email: info@bioworld.com

Tel: 6123263284

Fax: 6122933841

Bioworld technology, co. Ltd.

Add: No 9, weidi road Qixia District Nanjing, 210046, P. R. China.

Email: info@biogot.com

Tel: 0086-025-68037686

Fax: 0086-025-68035151