

GPR68 (R214) polyclonal antibody

Catalog: BS2315

Host: Rabbit

Reactivity: Human, Mouse, Rat

BackGround:

G protein-coupled receptors (GPRs), also known as seven transmembrane receptors, heptahelical receptors or 7TM receptors, comprise a superfamily of proteins that play a role in many different stimulus-response pathways. G protein-coupled receptors translate extracellular signals into intracellular signals (G protein activation) and they respond to a variety of signaling molecules, such as hormones and neurotransmitters. GPR68 (G protein-coupled receptor 68), also known as OGR1 (ovarian cancer G-protein coupled receptor 1), is a 365 amino acid multi-pass membrane protein that is expressed in testis, spleen, lung, brain and placenta. Existing as a member of the G protein-coupled receptor family, GPR68 functions as a high affinity receptor for sphingosylphosphorylcholine and is coupled to G proteins that enhance phosphoinositide hydrolysis.

Product:

Rabbit IgG, 1mg/ml in PBS with 0.02% sodium azide, 50% glycerol, pH7.2

Molecular Weight:

~41 kDa

Swiss-Prot:

Q15743

Purification&Purity:

The antibody was affinity-purified from rabbit antiserum by affinity-chromatography using epitope-specific immunogen and the purity is > 95% (by SDS-PAGE).

Applications:

WB: 1:500~1:1000

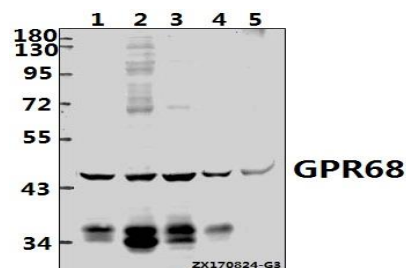
Storage&Stability:

Store at 4 °C short term. Aliquot and store at -20 °C long term. Avoid freeze-thaw cycles.

Specificity:

GPR68 (R214) polyclonal antibody detects endogenous levels of GPR68 protein.

DATA:



Western blot (WB) analysis of GPR68 (R214) pAb at 1:500 dilution

Lane1:U-87MG whole cell lysate(40ug)

Lane2:K562 whole cell lysate(40ug)

Lane3:MCF-7 whole cell lysate(40ug)

Lane4:The Lung tissue lysate of Mouse(40ug)

Lane5:The Lung tissue lysate of Rat(40ug)

Note:

For research use only, not for use in diagnostic procedure.

Bioworld Technology, Inc.

Add: 1660 South Highway 100, Suite 500 St. Louis Park, MN 55416, USA.

Email: info@bioworld.com

Tel: 6123263284

Fax: 6122933841

Bioworld technology, co. Ltd.

Add: No 9, weidi road Qixia District Nanjing, 210046, P. R. China.

Email: info@biogot.com

Tel: 0086-025-68037686

Fax: 0086-025-68035151