

IFIH1 polyclonal antibody

Catalog: BS2355

Host: Rabbit

Reactivity: Human, Mouse

BackGround:

IFIH1 (interferon induced with helicase C domain 1), also known as MDA5 (melanoma differentiation-associated protein 5), is one of a family of intracellular proteins known to recognise viral RNA and mediate the innate immune response. IFIH1 is causal in type 1 diabetes based on the protective associations of four rare variants, where the derived alleles are predicted to reduce gene expression or function.

Product:

Rabbit IgG, 1mg/ml in PBS with 0.02% sodium azide, 50% glycerol, pH7.2

Molecular Weight:

~ 135 kDa

Swiss-Prot:

Q9BYX4

Purification&Purity:

The antibody was affinity-purified from rabbit antiserum by affinity-chromatography using epitope-specific immunogen and the purity is > 95% (by SDS-PAGE).

Applications:

WB: 1:500~1:1000

Storage&Stability:

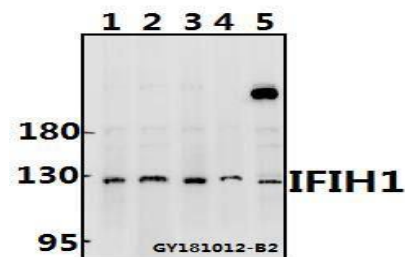
Store at 4 °C short term. Aliquot and store at -20 °C long

term. Avoid freeze-thaw cycles.

Specificity:

IFIH1 polyclonal antibody detects endogenous levels of IFIH1 protein.

DATA:



Western blot (WB) analysis of IFIH1 polyclonal antibody at 1:500 dilution

Lane1:DLD whole cell lysate(40ug)

Lane2:Panc1 whole cell lysate(40ug)

Lane3:HCT116 whole cell lysate(40ug)

Lane4:PC3 whole cell lysate(40ug)

Lane5:CT26 whole cell lysate(40ug)

Note:

For research use only, not for use in diagnostic procedure.

Bioworld Technology, Inc.

Add: 1660 South Highway 100, Suite 500 St. Louis Park, MN 55416, USA.

Email: info@bioworld.com

Tel: 6123263284

Fax: 6122933841

Bioworld technology, co. Ltd.

Add: No 9, weidi road Qixia District Nanjing, 210046, P. R. China.

Email: info@biogot.com

Tel: 0086-025-68037686

Fax: 0086-025-68035151