

EPS8L2 (K30) polyclonal antibody

Catalog: BS2364

Host: Rabbit

Reactivity: Human, Mouse, Rat

Background:

Eps8L2 (epidermal growth factor receptor kinase substrate 8-like protein 2), also known as EPS8R2 or PP13181, is a 715 amino acid protein that localizes to the cytoplasm and belongs to the Eps8 (epidermal growth factor receptor pathway substrate 8) family. Expressed in placenta and fibroblasts, Eps8L2 functions to stimulate the guanine exchange activity of Sos 1 (son of sevenless homolog 1), a protein that promotes the exchange of Ras-bound GDP for GTP. Additionally, Eps8L2 is thought to associate with Actin and, via this association, may play a role in membrane ruffling and remodeling of the Actin cytoskeleton. Through its ability to regulate protein activation and cytoskeleton dynamics, Eps8L2 may participate in cell growth and differentiation events within the cell. Eps8L2, a protein that is expressed as two isoforms due to alternative splicing, contains one PID (phosphotyrosine interaction) domain and one SH3 domain.

Product:

Rabbit IgG, 1mg/ml in PBS with 0.02% sodium azide, 50% glycerol, pH7.2

Molecular Weight:

~ 90 kDa

Swiss-Prot:

Q9H6S3

Purification&Purity:

The antibody was affinity-purified from rabbit antiserum by affinity-chromatography using epitope-specific immunogen and the purity is > 95% (by SDS-PAGE).

Applications:

WB: 1:500~1:1000

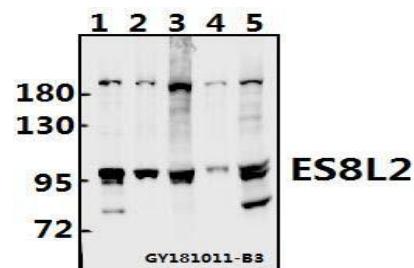
Storage&Stability:

Store at 4 °C short term. Aliquot and store at -20 °C long term. Avoid freeze-thaw cycles.

Specificity:

EPS8L2 polyclonal antibody detects endogenous levels of EPS8L2 protein.

DATA:



Western blot (WB) analysis of EPS8L2 (K30) polyclonal antibody at 1:500 dilution

Lane1:HCT116 whole cell lysate(10ug)

Lane2:A375 whole cell lysate(20ug)

Lane3:LOVO whole cell lysate(40ug)

Lane4:The Embryo tissue lysate of Mouse(20ug)

Lane5:PC12 whole cell lysate(40ug)

Note:

For research use only, not for use in diagnostic procedure.

Bioworld Technology, Inc.

Add: 1660 South Highway 100, Suite 500 St. Louis Park, MN 55416, USA.

Email: info@bioworld.com

Tel: 6123263284

Fax: 6122933841

Bioworld technology, co. Ltd.

Add: No 9, weidi road Qixia District Nanjing, 210046, P. R. China.

Email: info@biogot.com

Tel: 0086-025-68037686

Fax: 0086-025-68035151