

Clusterin- α (E436) polyclonal antibody

Catalog: BS2409

Host: Rabbit

Reactivity: Human, Mouse, Rat

BackGround:

Clusterin, also designated complement lysis inhibitor (CLI), apolipoprotein J (APOJ), sulfated glycoprotein 2 (SGP2), SP-40 and testosterone-repressed prostate message 2 (TRPM2), is a secretory, heterodimeric glycoprotein that influences immune regulation, cell adhesion, transformation, lipid transportation, tissue remodeling, membrane recycling and cell-cell interactions. Clusterin is synthesized as a 449 amino acid poly-peptide that is posttranslationally cleaved at an internal bond between Arg 227 and Ser 228. Two subunits, α and β , are associated through disulfide bonds. The β subunit (also called ApoJ α) corresponds to residues 23-227. The α subunit (also called ApoJ β) corresponds to residues 228-449.

Product:

Rabbit IgG, 1mg/ml in PBS with 0.02% sodium azide, 50% glycerol, pH7.2

Molecular Weight:

~ 38 kDa

Swiss-Prot:

P10909

Purification&Purity:

The antibody was affinity-purified from rabbit antiserum by affinity-chromatography using epitope-specific immunogen and the purity is > 95% (by SDS-PAGE).

Applications:

WB: 1:500~1:1000

IHC: 1:50~1:200

IF: 1:50~1:200

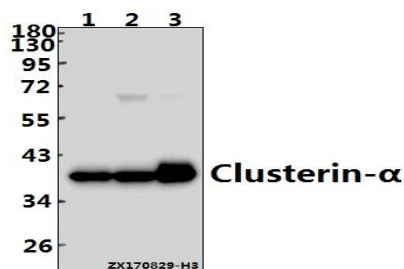
Storage&Stability:

Store at 4 °C short term. Aliquot and store at -20 °C long term. Avoid freeze-thaw cycles.

Specificity:

Clusterin- α (E436) polyclonal antibody detects endogenous levels of Clusterin- α protein.

DATA:

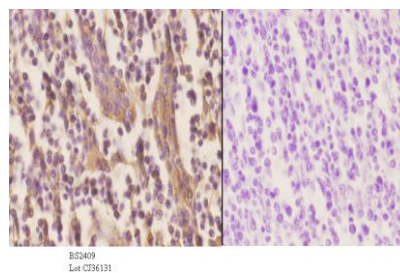


Western blot (WB) analysis of Clusterin- α (E436) pAb at 1:500 dilution

Lane1:Hela whole cell lysate(40ug)

Lane2:A549 whole cell lysate(40ug)

Lane3:SGC7901 whole cell lysate(40ug)



Immunohistochemistry (IHC) analyzes of Clusterin- α (E436) pAb in paraffin-embedded human tonsil carcinoma tissue at 1:50. showing cytoplasmic and nucleus /cell membrane staining. Negative control (the right) Using PBS instead of primary antibody, secondary antibody is Goat Anti-Rabbit IgG-biotin followed by avidin-peroxidase.

Note:

For research use only, not for use in diagnostic procedure.

Bioworld Technology, Inc.

Add: 1660 South Highway 100, Suite 500 St. Louis Park, MN 55416, USA.

Email: info@bioworld.com

Tel: 6123263284

Fax: 6122933841

Bioworld technology, co. Ltd.

Add: No 9, weidi road Qixia District Nanjing, 210046, P. R. China.

Email: info@biogot.com

Tel: 0086-025-68037686

Fax: 0086-025-68035151