

Cytochrome b5 (G82) polyclonal antibody

Catalog: BS2410

Host: Rabbit

Reactivity: Human, Mouse, Rat

BackGround:

Cytochrome b5 is a membrane-bound member of the cytochrome b family. A heme protein that functions as an electron carrier for many membrane-bound oxygenases, cytochrome b5 possesses two heme groups, which are not covalently attached to the protein. Two isoforms of cytochrome b5, a microsomal membrane-bound form and a cytoplasmic form, are produced by alternative splicing. Mutations in cytochrome b5 are associated with Leber's hereditary optic neuropathy and with myopathy.

Product:

Rabbit IgG, 1mg/ml in PBS with 0.02% sodium azide, 50% glycerol, pH7.2

Molecular Weight:

~ 15 kDa

Swiss-Prot:

P00167

Purification&Purity:

The antibody was affinity-purified from rabbit antiserum by affinity-chromatography using epitope-specific immunogen and the purity is > 95% (by SDS-PAGE).

Applications:

WB: 1:500~1:1000

IHC: 1:50~1:200

IF: 1:50~1:200

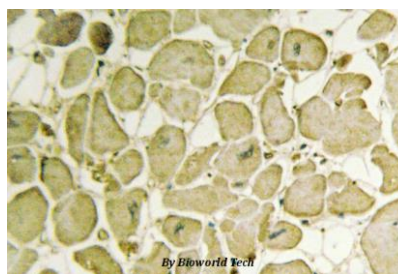
Storage&Stability:

Store at 4 °C short term. Aliquot and store at -20 °C long term. Avoid freeze-thaw cycles.

Specificity:

Cytochrome b5 (G82) polyclonal antibody detects endogenous levels of Cytochrome b5 protein.

DATA:



Immunohistochemistry (IHC) analyzes of Cytochrome b5 (G82) pAb in paraffin-embedded human heart tissue.

Note:

For research use only, not for use in diagnostic procedure.

Bioworld Technology, Inc.

Add: 1660 South Highway 100, Suite 500 St. Louis Park, MN 55416, USA.

Email: info@bioworld.com

Tel: 6123263284

Fax: 6122933841

Bioworld technology, co. Ltd.

Add: No 9, weidi road Qixia District Nanjing, 210046, P. R. China.

Email: info@biogot.com

Tel: 0086-025-68037686

Fax: 0086-025-68035151