

## Laminin gamma 1 polyclonal antibody

Catalog: BS2416

Host: Rabbit

Reactivity: Human

**BackGround:**

Binding to cells via a high affinity receptor, laminin is thought to mediate the attachment, migration and organization of cells into tissues during embryonic development by interacting with other extracellular matrix components.

**Product:**

1mg/ml in PBS with 0.02% sodium azide, 50% glycerol, pH7.2

**Molecular Weight:**

~ 177 kDa

**Swiss-Prot:**

P11047

**Purification&Purity:**

The antibody was affinity-purified from rabbit antiserum by affinity-chromatography using epitope-specific immunogen and the purity is > 95% (by SDS-PAGE).

**Applications:**

WB: 1:500~1:1000

IHC: 1:50~1:100

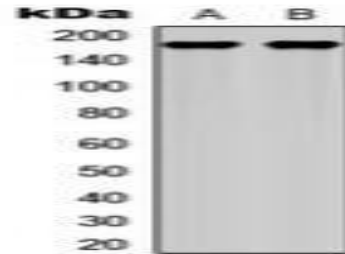
IF/ICC: 1:50~1:200

**Storage&Stability:**

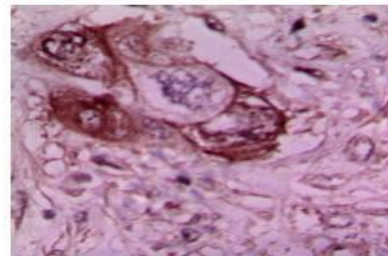
Store at 4 °C short term. Aliquot and store at -20 °C long term. Avoid freeze-thaw cycles.

**Specificity:**

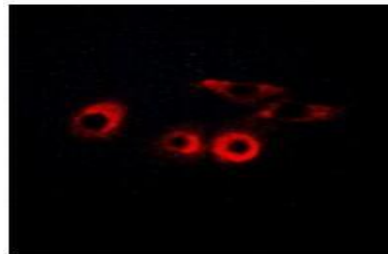
Laminin gamma 1 polyclonal antibody detects endogenous levels of Laminin gamma 1 protein.

**DATA:**

Western blot analysis of Laminin gamma 1 expression in PC3 (A), COS7 (B) whole cell lysates.



Immunohistochemical analysis of Laminin gamma 1 staining in human breast cancer formalin fixed paraffin embedded tissue section.



Immunofluorescent analysis of Laminin gamma 1 staining in HepG2 cells.

**Note:**

For research use only, not for use in diagnostic procedure.

**Bioworld Technology, Inc.**

Add: 1660 South Highway 100, Suite 500 St. Louis Park, MN 55416, USA.

Email: [info@bioworld.com](mailto:info@bioworld.com)

Tel: 6123263284

Fax: 6122933841

**Bioworld technology, co. Ltd.**

Add: No 9, weidi road Qixia District Nanjing, 210046, P. R. China.

Email: [info@biogot.com](mailto:info@biogot.com)

Tel: 0086-025-68037686

Fax: 0086-025-68035151