

## Cdc7 (F35) polyclonal antibody

Catalog: BS2447

Host: Rabbit

Reactivity: Human, Mouse, Rat

### Background:

DNA replication in eukaryotic cells is dependent on the phosphorylation of the pre-replicative complex (preRC) at the origin of replication. Two complexes of proteins mediate this event, the cyclin dependent kinase (CDK) complex, and the Cdc7 kinase-ASK complex. Human Cdc7 kinase consists of 574 amino acids with a molecular weight of 55 kDa. The activity of Cdc7 kinase oscillates during cell cycle. The major targets of Cdc7 kinase are proteins that belong to the MCM complex (mini chromosome maintenance proteins). Cdc7 kinase was also found to be important in meiosis, checkpoint responses, maintenance of chromosome structure, and repair.

### Product:

Rabbit IgG, 1mg/ml in PBS with 0.02% sodium azide, 50% glycerol, pH7.2

### Molecular Weight:

~ 64 kDa

### Swiss-Prot:

O00311

### Purification&Purity:

The antibody was affinity-purified from rabbit antiserum by affinity-chromatography using epitope-specific immunogen and the purity is > 95% (by SDS-PAGE).

### Applications:

WB: 1:500~1:1000

IHC: 1:50~1:200

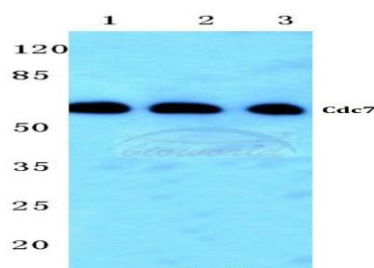
### Storage&Stability:

Store at 4 °C short term. Aliquot and store at -20 °C long term. Avoid freeze-thaw cycles.

### Specificity:

Cdc7 (F35) polyclonal antibody detects endogenous levels of Cdc7 protein.

### DATA:



Western blot (WB) analysis of Cdc7 (F35) polyclonal antibody at 1:500 dilution

Lane1:Hela cell lysate

Lane2:sp2/0 cell lysate

Lane3:H9C2 cell lysate

### Note:

For research use only, not for use in diagnostic procedure.

### Bioworld Technology, Inc.

Add: 1660 South Highway 100, Suite 500 St. Louis Park, MN 55416, USA.

Email: [info@bioworld.com](mailto:info@bioworld.com)

Tel: 6123263284

Fax: 6122933841

### Bioworld technology, co. Ltd.

Add: No 9, weidi road Qixia District Nanjing, 210046, P. R. China.

Email: [info@biogot.com](mailto:info@biogot.com)

Tel: 0086-025-68037686

Fax: 0086-025-68035151