

Hrs (R481) polyclonal antibody

Catalog: BS2448

Host: Rabbit

Reactivity: Human, Mouse, Rat

Background:

The hepatocyte growth factor-regulated tyrosine kinase substrate (Hrs) is a zinc-finger protein that interacts with STAM and undergoes tyrosine phosphorylation in response to IL2, CSF2 or HGF. Hrs is involved in intracellular trafficking and signal transduction and is associated with early endosomes. H contains a phosphatidylinositol 3-phosphate-binding domain that contributes to its endosomal targeting, where Hrs colocalizes with Clathrin via a Clathrin box motif at the carboxy terminus of Hrs. Hrs is essential for ventral folding morphogenesis and shares structural similarity to the yeast protein Vps27p, which is involved in vacuolar protein sorting. The human Hrs gene, which maps to chromosome 17q25, encodes a 777 amino acid protein. In Schwann cells, Hrs colocalizes at endosomes with the tumor suppressor protein schwannomin, suggesting a role for schwannomin in Hrs-mediated cell signaling.

Product:

Rabbit IgG, 1mg/ml in PBS with 0.02% sodium azide, 50% glycerol, pH7.2

Molecular Weight:

~ 86 kDa

Swiss-Prot:

O14964

Purification&Purity:

The antibody was affinity-purified from rabbit antiserum by affinity-chromatography using epitope-specific immunogen and the purity is > 95% (by SDS-PAGE).

Applications:

WB: 1:500~1:1000

IHC: 1:50~1:200

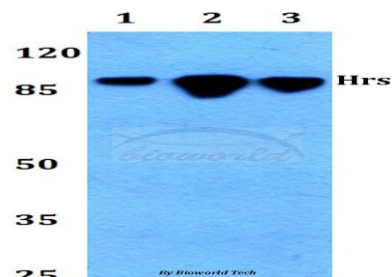
IF: 1:50~1:200

Storage&Stability:

Store at 4 °C short term. Aliquot and store at -20 °C long term. Avoid freeze-thaw cycles.

Specificity:

Hrs (R481) polyclonal antibody detects endogenous levels of Hrs protein.

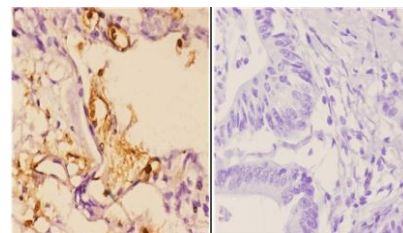
DATA:

Western blot (WB) analysis of Hrs (R481) polyclonal antibody at 1:500 dilution

Lane1:HEK293T whole cell lysate

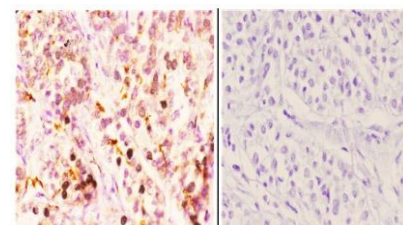
Lane2:Raw264.7 whole cell lysate

Lane3:H9C2 whole cell lysate



BS2448
Lot C136131

Immunohistochemistry (IHC) analyzes of Hrs (R481) pAb in paraffin-embedded human colon carcinoma tissue at 1:50. showing Cytoplasm and Nucleus staining. Negative control (the right) Using PBS instead of primary antibody, secondary antibody is Goat Anti-Rabbit IgG-biotin followed by avidin-peroxidase.



BS2448
Lot C136131

Immunohistochemistry (IHC) analyzes of Hrs (R481) pAb in paraf-

Bioworld Technology, Inc.

Add: 1660 South Highway 100, Suite 500 St. Louis Park, MN 55416, USA.

Email: info@bioworld.com

Tel: 6123263284

Fax: 6122933841

Bioworld technology, co. Ltd.

Add: No 9, weidi road Qixia District Nanjing, 210046, P. R. China.

Email: info@biogot.com

Tel: 0086-025-68037686

Fax: 0086-025-68035151



PRODUCT DATA SHEET

Bioworld Technology, Inc.

fin-embedded human liver carcinoma tissue at 1:50 showing Cytoplasm and Nucleus staining. Negative control (the right) Using PBS instead of primary antibody, secondary antibody is Goat Anti-Rabbit IgG-biotin

followed by avidin-peroxidase.

Note:

For research use only, not for use in diagnostic procedure.

Bioworld Technology, Inc.

Add: 1660 South Highway 100, Suite 500 St. Louis Park, MN 55416, USA.

Email: info@bioworld.com

Tel: 6123263284

Fax: 6122933841

Bioworld technology, co. Ltd.

Add: No 9, weidi road Qixia District Nanjing, 210046, P. R. China.

Email: info@biogot.com

Tel: 0086-025-68037686

Fax: 0086-025-68035151