

EMMPRIN (Q370) polyclonal antibody

Catalog: BS2472

Host: Rabbit

Reactivity: Human, Mouse, Rat

BackGround:

Extracellular matrix metalloproteinase inducer (EMMPRIN), also designated basigin or CD147, is involved in the regulation of matrix remodeling at the epidermal-dermal interface. EMMPRIN stimulates the production of interstitial collagenase, gelatinase A, stromelysin-1 and various metalloproteinases (MMPs) by fibroblasts. These enzymes, which are typically increased during tissue degradation and wound healing, are important factors in cancer invasion and metastasis.

Product:

Rabbit IgG, 1mg/ml in PBS with 0.02% sodium azide, 50% glycerol, pH7.2

Molecular Weight:

~ 55 kDa

Swiss-Prot:

P35613

Purification&Purity:

The antibody was affinity-purified from rabbit antiserum by affinity-chromatography using epitope-specific immunogen and the purity is > 95% (by SDS-PAGE).

Applications:

WB: 1:500~1:1000

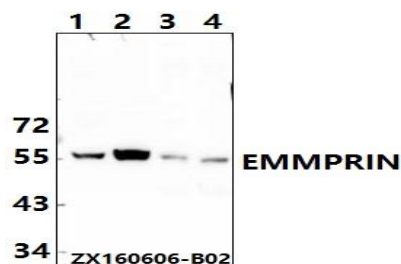
IHC: 1:50~1:200

Storage&Stability:

Store at 4 °C short term. Aliquot and store at -20 °C long term. Avoid freeze-thaw cycles.

Specificity:

EMMPRIN (Q370) polyclonal antibody detects endogenous levels of EMMPRIN protein.

DATA:

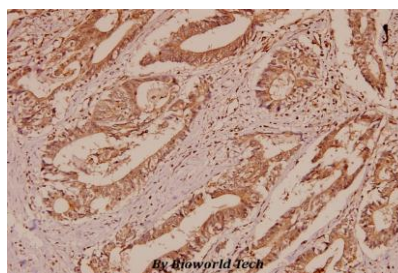
Western blot (WB) analysis of EMMPRIN (Q370) polyclonal antibody at 1:500 dilution

Lane1:HEK293T whole cell lysate

Lane2:DLD whole cell lysate

Lane3:The fetal heart tissue lysate of Mouse

Lane4:The fetal heart tissue lysate of Rat



Immunohistochemistry (IHC) analyzes of EMMPRIN (Q370) pAb in paraffin-embedded human colorectal carcinoma tissue at 1:50.

Note:

For research use only, not for use in diagnostic procedure.

Bioworld Technology, Inc.

Add: 1660 South Highway 100, Suite 500 St. Louis Park, MN 55416, USA.

Email: info@bioworld.com

Tel: 6123263284

Fax: 6122933841

Bioworld technology, co. Ltd.

Add: No 9, weidi road Qixia District Nanjing, 210046, P. R. China.

Email: info@biogot.com

Tel: 0086-025-68037686

Fax: 0086-025-68035151