

## Dlx-4 (Q90) polyclonal antibody

Catalog: BS2500

Host: Rabbit

Reactivity: Human, Mouse, Rat

### BackGround:

Dlx genes are a highly conserved family of six different (Dlx1–6) homeo box-containing genes that share homology with distal-less (Dll), a gene expressed in the head and limbs of the developing fruit fly. Dlx genes are expressed in spatially and temporally restricted patterns in craniofacial primordia, basal telencephalon and dien-cephalon, and in distal regions of extending appendages, including the limb and the genital bud. The differential expression of Dlx influences patterning, morphogenesis and histogenesis in these tissues. The Dlx gene products can activate transcription and are localized primarily to the nucleus, although Dlx-5 can be found in the cytoplasm. Dlx proteins influence different stages of proper tissue development, including patterning of the orofacial skeleton (craniofacial ectomesenchyme) and differentiation of structures within and between teeth.

### Product:

Rabbit IgG, 1mg/ml in PBS with 0.02% sodium azide, 50% glycerol, pH7.2

### Molecular Weight:

~ 34 kDa

### Swiss-Prot:

Q92988

### Purification&Purity:

The antibody was affinity-purified from rabbit antiserum by affinity-chromatography using epitope-specific im-

munogen and the purity is > 95% (by SDS-PAGE).

### Applications:

IHC: 1:50~1:200

IF: 1:50~1:200

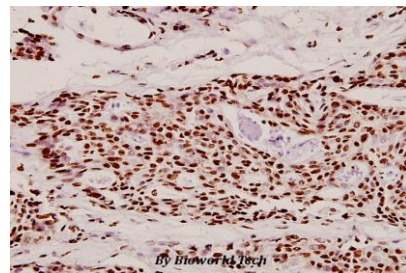
### Storage&Stability:

Store at 4 °C short term. Aliquot and store at -20 °C long term. Avoid freeze-thaw cycles.

### Specificity:

Dlx-4 (Q90) polyclonal antibody detects endogenous levels of Dlx-4 protein.

### DATA:



Immunohistochemistry (IHC) analyzes of Dlx-4 (Q90) pAb in paraffin-embedded human breast carcinoma tissue at 1:100.

### Note:

For research use only, not for use in diagnostic procedure.

### Bioworld Technology, Inc.

Add: 1660 South Highway 100, Suite 500 St. Louis Park, MN 55416, USA.

Email: [info@bioworld.com](mailto:info@bioworld.com)

Tel: 6123263284

Fax: 6122933841

### Bioworld technology, co. Ltd.

Add: No 9, weidi road Qixia District Nanjing, 210046, P. R. China.

Email: [info@biogot.com](mailto:info@biogot.com)

Tel: 0086-025-68037686

Fax: 0086-025-68035151