

Elongin A1 (R129) polyclonal antibody

Catalog: BS2530

Host: Rabbit

Reactivity: Human

BackGround:

Individuals harboring germline mutations in the tumor suppressor gene von Hippel-Lindau (VHL) exhibit an increased susceptibility to a variety of tumors including renal carcinoma, hemangio-blastoma of the central nervous system and pheochromo-cytoma. The Elongin (SIII) complex has been identified as the functional target of the VHL protein. Elongin (SIII) is a heterotrimer composed of a transcriptional active subunit designated Elongin A and two regulatory subunits designated Elongin B and Elongin C. VHL functions by binding to the Elongin B and C subunits, inhibiting the transcriptional efficacy of the Elongin (SIII) complex. The VHL protein migrates with an apparent molecular weight of 38 kDa. The Elongin A subunit is 773 amino acids in length and has an apparent molecular weight of 110 kDa, while Elongin B and C are 18 kDa and 15 kDa proteins, respectively.

Product:

Rabbit IgG, 1mg/ml in PBS with 0.02% sodium azide, 50% glycerol, pH7.2

Molecular Weight:

~ 100 kDa

Swiss-Prot:

Q14241

Purification&Purity:

The antibody was affinity-purified from rabbit antiserum by affinity-chromatography using epitope-specific immunogen and the purity is > 95% (by SDS-PAGE).

Applications:

WB: 1:500~1:1000

IHC: 1:50~1:200

Storage&Stability:

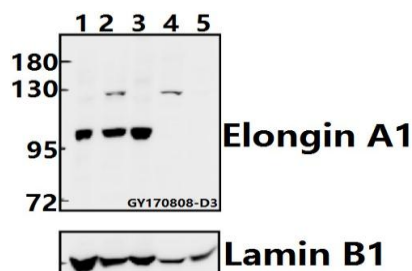
Store at 4 °C short term. Aliquot and store at -20 °C long

term. Avoid freeze-thaw cycles.

Specificity:

Elongin A1 (R129) polyclonal antibody detects endogenous levels of Elongin A1 protein.

DATA:



Western blot (WB) analysis of Elongin A1 (R129) pAb at 1:500 dilution

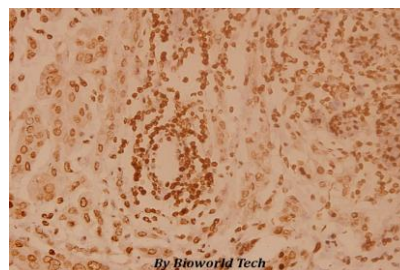
Lane1:HEK293T whole cell lysate(40ug)

Lane2:PC3 whole cell lysate(40ug)

Lane3:K562 whole cell lysate(40ug)

Lane4:H9C2 whole cell lysate(40ug)

Lane5:BV2 whole cell lysate(40ug)



Immunohistochemistry (IHC) analyzes of Elongin A1 (R129) pAb in paraffin-embedded human breast carcinoma tissue at 1:100.

Note:

For research use only, not for use in diagnostic procedure.

Bioworld Technology, Inc.

Add: 1660 South Highway 100, Suite 500 St. Louis Park, MN 55416, USA.

Email: info@bioworld.com

Tel: 6123263284

Fax: 6122933841

Bioworld technology, co. Ltd.

Add: No 9, weidi road Qixia District Nanjing, 210046, P. R. China.

Email: info@biogot.com

Tel: 0086-025-68037686

Fax: 0086-025-68035151