

## GPR173 (Y289) polyclonal antibody

Catalog: BS2610

Host: Rabbit

Reactivity: Human, Mouse, Rat

### BackGround:

G protein-coupled receptors (GPRs or GPCRs), are members of the largest protein family and play a role in many different stimulus-response pathways. G-protein coupled receptors mediate extracellular signals into intracellular signals (G-protein activation). They respond to a great variety of signaling molecules, including hormones, neurotransmitters and other proteins and peptides. GPR173 is also known as super conserved receptor expressed in brain 3 (SREB3). It is an orphan receptor that is expressed primarily in brain and ovary tissues.

### Product:

Rabbit IgG, 1mg/ml in PBS with 0.02% sodium azide, 50% glycerol, pH7.2

### Molecular Weight:

~ 53 kDa

### Swiss-Prot:

Q9NS66

### Purification&Purity:

The antibody was affinity-purified from rabbit antiserum by affinity-chromatography using epitope-specific immunogen and the purity is > 95% (by SDS-PAGE).

### Applications:

WB: 1:500~1:1000

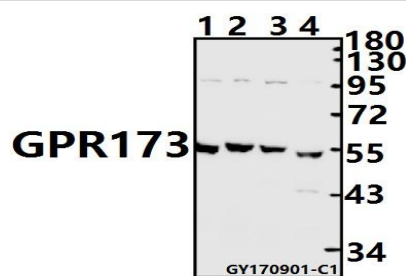
### Storage&Stability:

Store at 4 °C short term. Aliquot and store at -20 °C long term. Avoid freeze-thaw cycles.

### Specificity:

GPR173 (Y289) polyclonal antibody detects endogenous levels of GPR173 protein.

### DATA:



Western blot (WB) analysis of GPR173 (Y289) pAb at 1:1000 dilution

Lane1:BV2 whole cell lysate(20ug)

Lane2:C6 whole cell lysate(20ug)

Lane3:HeLa whole cell lysate(20ug)

Lane4:SK-OVCAR3 whole cell lysate(20ug)

### Note:

For research use only, not for use in diagnostic procedure.

### Bioworld Technology, Inc.

Add: 1660 South Highway 100, Suite 500 St. Louis Park, MN 55416, USA.

Email: [info@bioworld.com](mailto:info@bioworld.com)

Tel: 6123263284

Fax: 6122933841

### Bioworld technology, co. Ltd.

Add: No 9, weidi road Qixia District Nanjing, 210046, P. R. China.

Email: [info@biogot.com](mailto:info@biogot.com)

Tel: 0086-025-68037686

Fax: 0086-025-68035151