

CRF-RII (H112) polyclonal antibody

Catalog: BS2616

Host: Rabbit

Reactivity: Human, Mouse, Rat

BackGround:

Two CRF receptors, designated CRF-RI and CRF-RII, exhibit distinct brain localizations. Two forms of CRF-RII, designated CRF-RII α and CRF-RII β , result from alternative mRNA splicing. Urocortin, an additional member of the CRF family, shares 63% sequence identity with urotensin and 45% sequence identity with CRF. Urocortin specifically binds to and activates CRF-RI and CRF-RII, but binds to CRF-RII more efficiently than CRF, suggesting that it may be the true, high affinity ligand for the CRF receptor type II.

Product:

Rabbit IgG, 1mg/ml in PBS with 0.02% sodium azide, 50% glycerol, pH7.2

Molecular Weight:

~ 48 kDa

Swiss-Prot:

Q13324

Purification&Purity:

The antibody was affinity-purified from rabbit antiserum by affinity-chromatography using epitope-specific immunogen and the purity is > 95% (by SDS-PAGE).

Applications:

WB: 1:500~1:1000

IF: 1:50~1:200

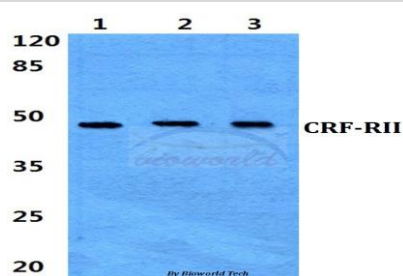
Storage&Stability:

Store at 4 °C short term. Aliquot and store at -20 °C long term. Avoid freeze-thaw cycles.

Specificity:

CRF-RII (H112) polyclonal antibody detects endogenous levels of CRF-RII protein.

DATA:



Western blot (WB) analysis of CRF-RII (H112) polyclonal antibody at 1:500 dilution

Lane1:Hela cell lysate

Lane2:sp2/0 cell lysate

Lane3:H9C2 cell lysate

Note:

For research use only, not for use in diagnostic procedure.

Bioworld Technology, Inc.

Add: 1660 South Highway 100, Suite 500 St. Louis Park, MN 55416, USA.

Email: info@bioworld.com

Tel: 6123263284

Fax: 6122933841

Bioworld technology, co. Ltd.

Add: No 9, weidi road Qixia District Nanjing, 210046, P. R. China.

Email: info@biogot.com

Tel: 0086-025-68037686

Fax: 0086-025-68035151