

Glucosidase II β (K117) polyclonal antibody

Catalog: BS2646

Host: Rabbit

Reactivity: Human, Mouse, Rat

Background:

Trimming of glucoses from N-linked core glycans on newly synthesized glycoproteins occurs sequentially through the action of Glucosidases I and II in the endoplasmic reticulum (ER). Glucosidase II is an ER-localized enzyme that contains α and β subunits (Glucosidase II α and Glucosidase II β). The α and β subunits form a defined heterodimeric complex with a molecular weight about 161 kDa. Glucosidase II α is the catalytic core of the enzyme and can function independently of the β subunit. The sequence of Glucosidase II β encodes protein rich in glutamic and aspartic acid with a putative ER retention signal (HDEL) at the C terminus. The phosphorylated form of Glucosidase II β is localized in the plasma membrane and is highly expressed in FGF stimulated fibroblasts and epidermal carcinoma cells. Glucosidase II β was first purified from a human carcinoma cell line as a potential substrate for protein kinase C. Through the HDEL signal at the C-terminus, Glucosidase II β retains the complete complex in the ER.

Product:

Rabbit IgG, 1mg/ml in PBS with 0.02% sodium azide, 50% glycerol, pH7.2

Molecular Weight:

~ 59, 80 kDa

Swiss-Prot:

P14314

Purification&Purity:

The antibody was affinity-purified from rabbit antiserum by affinity-chromatography using epitope-specific immunogen and the purity is > 95% (by SDS-PAGE).

Applications:

WB: 1:500~1:1000

IHC: 1:50~1:200

IF: 1:50~1:200

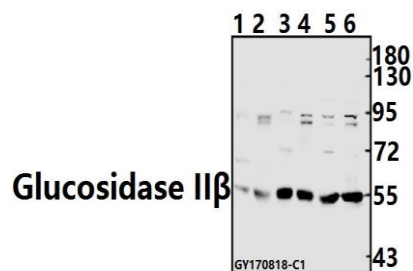
Storage&Stability:

Store at 4 °C short term. Aliquot and store at -20 °C long term. Avoid freeze-thaw cycles.

Specificity:

Glucosidase II β (K117) polyclonal antibody detects endogenous levels of Glucosidase II β protein.

DATA:



Western blot (WB) analysis of Glucosidase II β (K117) pAb at 1:500 dilution

Lane1: The Testis tissue lysate of Mouse(40ug)

Lane2: The Testis tissue lysate of Rat(40ug)

Lane3: SGC7901 whole cell lysate(40ug)

Lane4: HCT116 whole cell lysate(40ug)

Lane5: A549 whole cell lysate(40ug)

Lane6: MCF-7 whole cell lysate(40ug)

Note:

For research use only, not for use in diagnostic procedure.

Bioworld Technology, Inc.

Add: 1660 South Highway 100, Suite 500 St. Louis Park, MN 55416, USA.

Email: info@bioworld.com

Tel: 6123263284

Fax: 6122933841

Bioworld technology, co. Ltd.

Add: No 9, weidi road Qixia District Nanjing, 210046, P. R. China.

Email: info@biogot.com

Tel: 0086-025-68037686

Fax: 0086-025-68035151