

PB-cadherin (T134) polyclonal antibody

Catalog: BS2685

Host: Rabbit

Reactivity: Human

BackGround:

Cadherins are calcium-dependent cell adhesion proteins. They preferentially interact with themselves in a homophilic manner in connecting cells; cadherins may thus contribute to the sorting of heterogeneous cell types. PB-cadherins may have a role in the morphological organization of pituitary gland and brain tissues.

Product:

Rabbit IgG, 1mg/ml in PBS with 0.02% sodium azide, 50% glycerol, pH7.2

Molecular Weight:

~ 89 kDa

Swiss-Prot:

Q9UJ99

Purification&Purity:

The antibody was affinity-purified from rabbit antiserum by affinity-chromatography using epitope-specific immunogen and the purity is > 95% (by SDS-PAGE).

Applications:

WB: 1:500~1:1000

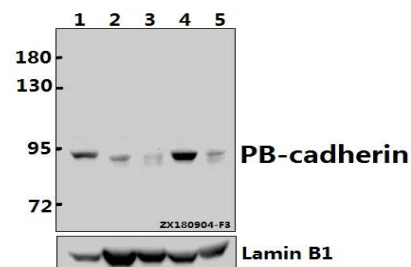
Storage&Stability:

Store at 4 °C short term. Aliquot and store at -20 °C long term. Avoid freeze-thaw cycles.

Specificity:

PB-cadherin (T134) pAb detects endogenous levels of PB-cadherin protein.

DATA:



Western blot (WB) analysis of PB-cadherin (T134) pAb at 1:500 dilution

Lane1:Panc1 whole cell lysate(40ug)

Lane2:HEK293T whole cell lysate(40ug)

Lane3:EC9706 whole cell lysate(40ug)

Lane4:A2780 whole cell lysate(40ug)

Lane5:SGC7901 whole cell lysate(40ug)

Note:

For research use only, not for use in diagnostic procedure.

Bioworld Technology, Inc.

Add: 1660 South Highway 100, Suite 500 St. Louis Park, MN 55416, USA.

Email: info@bioworld.com

Tel: 6123263284

Fax: 6122933841

Bioworld technology, co. Ltd.

Add: No 9, weidi road Qixia District Nanjing, 210046, P. R. China.

Email: info@biogot.com

Tel: 0086-025-68037686

Fax: 0086-025-68035151